



**PUBLIC AND STAKEHOLDER INVOLVEMENT**



**The Ragged Mountain Fire Protection District is conducting a Master Plan to assess future service needs.**

**For more information, please visit:**

<http://sites.jviation.com/rgm>



If you have questions, please contact:

Hilary Fletcher  
900 S. Broadway, Suite 350  
Denver, CO 80209  
Email: [hilary.fletcher@jviation.com](mailto:hilary.fletcher@jviation.com)  
Fax: 303-524-3031



October 10, 2013

Dear Ragged Mountain Fire Protection District Resident,

I am writing to request your input with regard to the current and future role of fire protection services here in our community. The Ragged Mountain Fire Protection District contributes to creating a safe environment through the provision of quality emergency services, public education and fire prevention programs. In order to continue providing thoughtful and strategic decision-making, the District Board has recently initiated a Master Plan Study to assess the future fire service needs of the District. This study takes on an increased importance with the severe fire and flood seasons that Colorado has recently experienced.

This long range plan will assist and guide the Board in decision-making with regard to service levels, facility and equipment needs as well as education services for fire prevention and mitigation. A key component of the study is to gather baseline data and we are asking for your participation in the attached survey. The survey will provide us with demographic information which will aid in determining the existing and future needs of the District.

Your input plays an important role in determining the type of facilities and services that should be considered in the Master Plan Study. We are asking that you complete the survey within two weeks of receipt (no later than October 25, 2013) and mail, fax, or email it back to the contact person listed on the survey. For further information, or to follow the Master Plan progress, you can access the project website at <http://sites.jviation.com/rgm/index.htm>.

Thank you in advance for your complete and timely response to our request. If you have any questions, please do not hesitate to contact myself, any District Board member or Hilary Fletcher, Master Plan Project Manager at 720.544.6521.

Sincerely,

RAGGED MOUNTAIN FIRE PROTECTION DISTRICT BOARD

Michael R. Davis, President

## RAGGED MOUNTAIN FIRE PROTECTION DISTRICT SURVEY

As part of the fire district master plan, the Ragged Mountain Fire Protection District is seeking your input and feedback. Thank you for your time to complete the following survey.

Your survey response can be returned to:

**Mail:**

Attn: Morgan Einspahr  
900 S. Broadway, Suite 350  
Denver, CO 80209

**Email:**

morgan.einspahr@jviation.com

**Fax:**

303-524-3031

We ask that you return your completed survey within two weeks of receipt. For further information on the master plan, please visit [www.sites.jviation.com/rgm](http://www.sites.jviation.com/rgm). Name and location are optional on the survey and responses will be kept confidential. Thanks for your assistance!

1. Contact Information (Optional)

Name: \_\_\_\_\_

Address (physical address of property served by  
Fire District if different from mailing address):  
\_\_\_\_\_  
\_\_\_\_\_

Phone: \_\_\_\_\_

Email: \_\_\_\_\_

2. Which option best describes your relationship

- I live in Ragged Mountain Fire Protection District
- I own a business in Ragged Mountain Fire Protection District
- I manage a business in Ragged Mountain Fire Protection District
- I am an employee of a business in Ragged Mountain Fire Protection District
- None of the above

3. If you own, manage, or are an employee of a business in Ragged Mountain Fire Protection District, what type of business is it?

- Agriculture related business
- Energy related business
- Commercial business
- Other: \_\_\_\_\_

4. If you are a resident, is your residency:

- Full time
- Part time: \_\_\_\_\_ months/year
- Seasonal: \_\_\_\_\_ what season

5. How long do you intend to remain at your current residence?

- Less than 1 year
- 1-5 years
- 6-10 years
- 11-15 years
- More than 15 years

6. What is your age?

- Less than 20 years old
- 21-30 years old
- 31-40 years old
- 41-50 years old
- 51-60 years old
- 61-70 years old
- Over 70 years old

7. Gender

- Male
- Female



## RAGGED MOUNTAIN FIRE PROTECTION DISTRICT SURVEY

8. What is the highest level of education you have completed?

- High School/GED
- Tech School/Some College
- College Graduate
- Postgraduate Work

9. What is your average gross household income?

- Less than \$24,999
- \$25,000-\$49,999
- \$50,000-\$74,999
- \$75,000-\$99,999
- \$100,000 or more

10. Does your household have dependents?

- Yes
- No

11. Have you ever used any of the following services?

- Fire Services
- Emergency Medical Services

12. Have you ever used the local fire or emergency medical services?

- Never
- Yes, within the past 6 months
- Yes, within the past 1 year
- Yes, within the past 5 years
- Yes, within the past 10 years
- Yes, within the past 25 years

13. In the last five years, have you used the local fire or emergency medical services?

- Never
- Yes, 1-2 calls
- Yes, 3-5 calls
- Yes, 6-10 calls

14. How would you rate the overall level of local fire-based emergency services?

- Very Poor
- Poor
- Average
- Good
- Excellent
- No Opinion

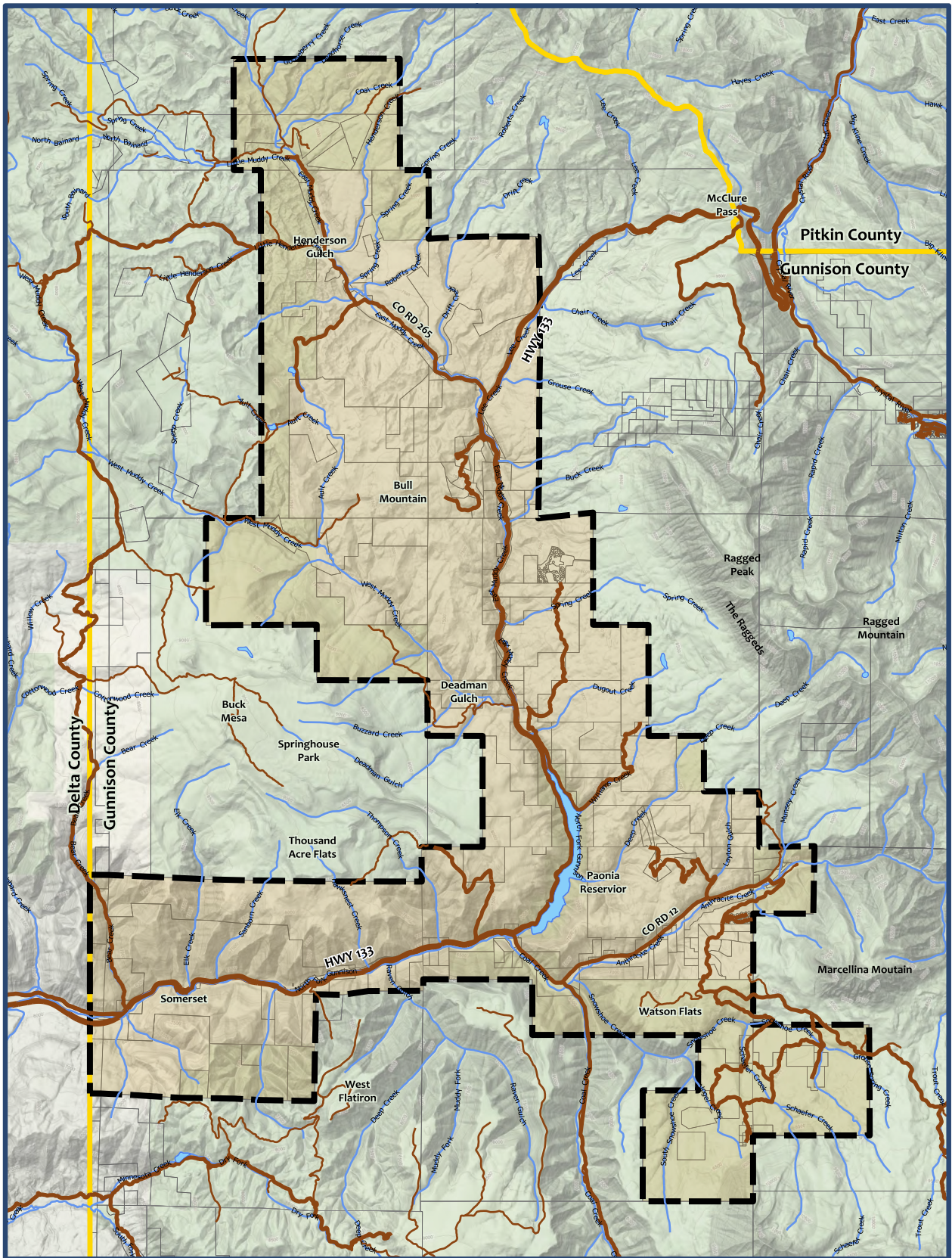
15. How would you rate the overall level of local emergency medical services?

- Very Poor
- Poor
- Average
- Good
- Excellent
- No Opinion

16. Check all services below that you feel are needed in the Ragged Mountain Fire Protection District.

- Fire Suppression (i.e. putting out fires)
- Fire code inspections
- Response to medical emergencies
- Fire investigations
- Response to hazardous materials emergencies
- Response to other perceived emergencies (e.g. carbon monoxide alarms)
- Response to motor vehicle accidents
- Land-based water rescues
- Public education events and programs





No Scale

# DISTRICT BOUNDARY MAP

Prepared by:  
**TG Malloy Consulting, LLC**  
 402 Park Drive  
 Glenwood Springs, CO 81601  
 p. 970.945.0832  
 tgmalloy@sopris.net

Date: 9/25/2013



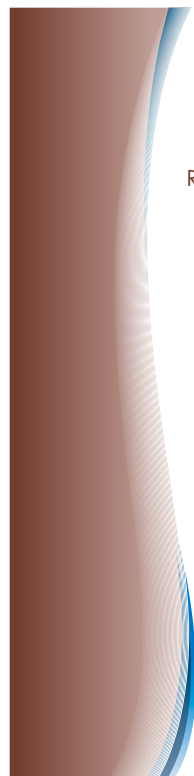
As part of the fire protection district master plan, the Ragged Mountain Fire Protection District is seeking your input and feedback.

You were sent a survey several weeks ago. Please disregard this notice if you have already completed the survey. If not, please complete the survey and return it to the address below. If you prefer, you may also complete the survey online at <http://sgiz.mobi/s3/RGM-Fire>.

Please respond no later than **November 5th, 2013**.

If you have questions, please contact:

Morgan Einspahr  
900 S. Broadway, Suite 350  
Denver, CO 80209  
Email: [Morgan.einspahr@jviation.com](mailto:Morgan.einspahr@jviation.com)  
Fax: 303-524-3031



Ragged Mountain Fire Protection District  
P.O. Box 570, 3764 Hwy 133  
Somerset, CO 81434





# Ragged Mountain FIRE PROTECTION DISTRICT MASTER PLAN

# Be Part of the Plan!

- Legend
- Address Points
  - Roads - USFS
  - Roads - County
  - HWY 133

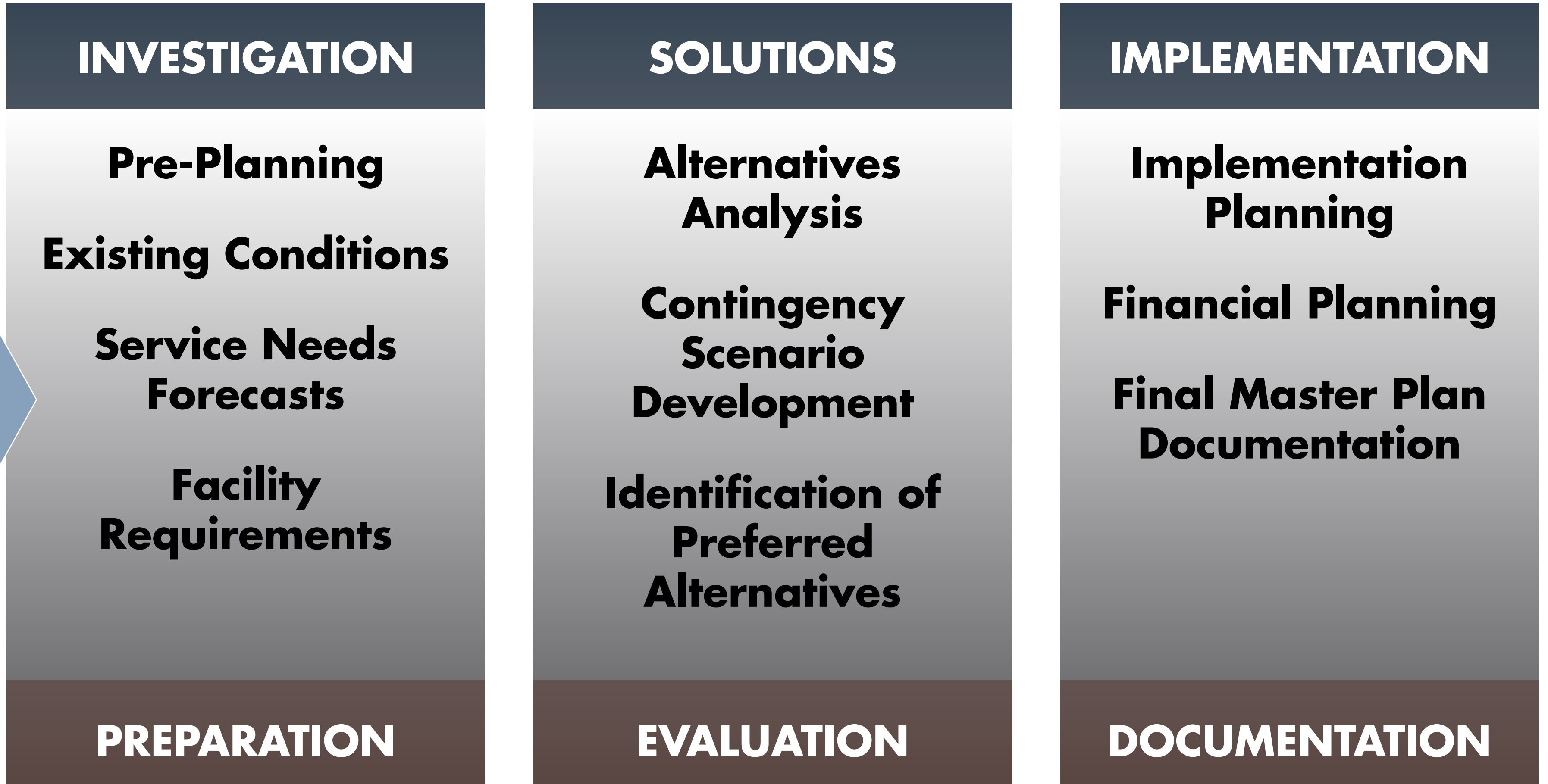
# OPEN HOUSE

# Tuesday, October 14 5:00 - 7:00 p.m.

# Somerset Library

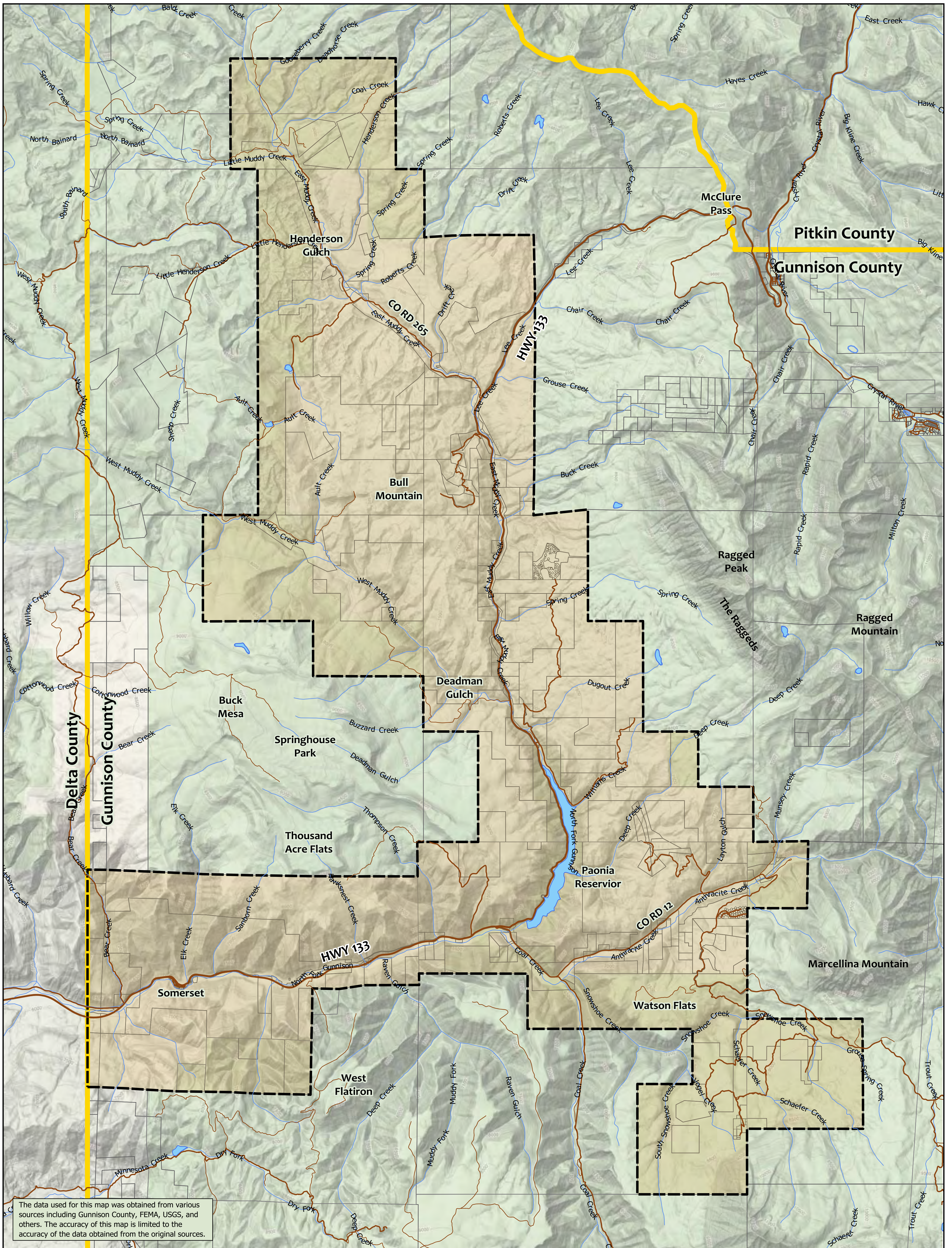


**MASTER  
PLAN  
PROCESS**








- MEETINGS AND ENGAGEMENT**
- ▶ Surveys
  - ▶ Kitchen Chats
  - ▶ Working Papers
  - ▶ Open Houses
  - ▶ Stakeholder Meetings
  - ▶ Working Sessions and Public Hearing

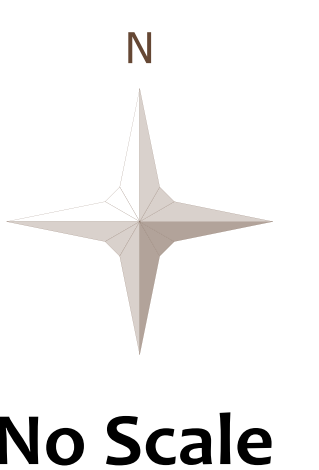
- COMMUNICATION AND EDUCATION**
- ▶ Website
  - ▶ Media Outreach (PSAs, Display Ads)
  - ▶ Brochures



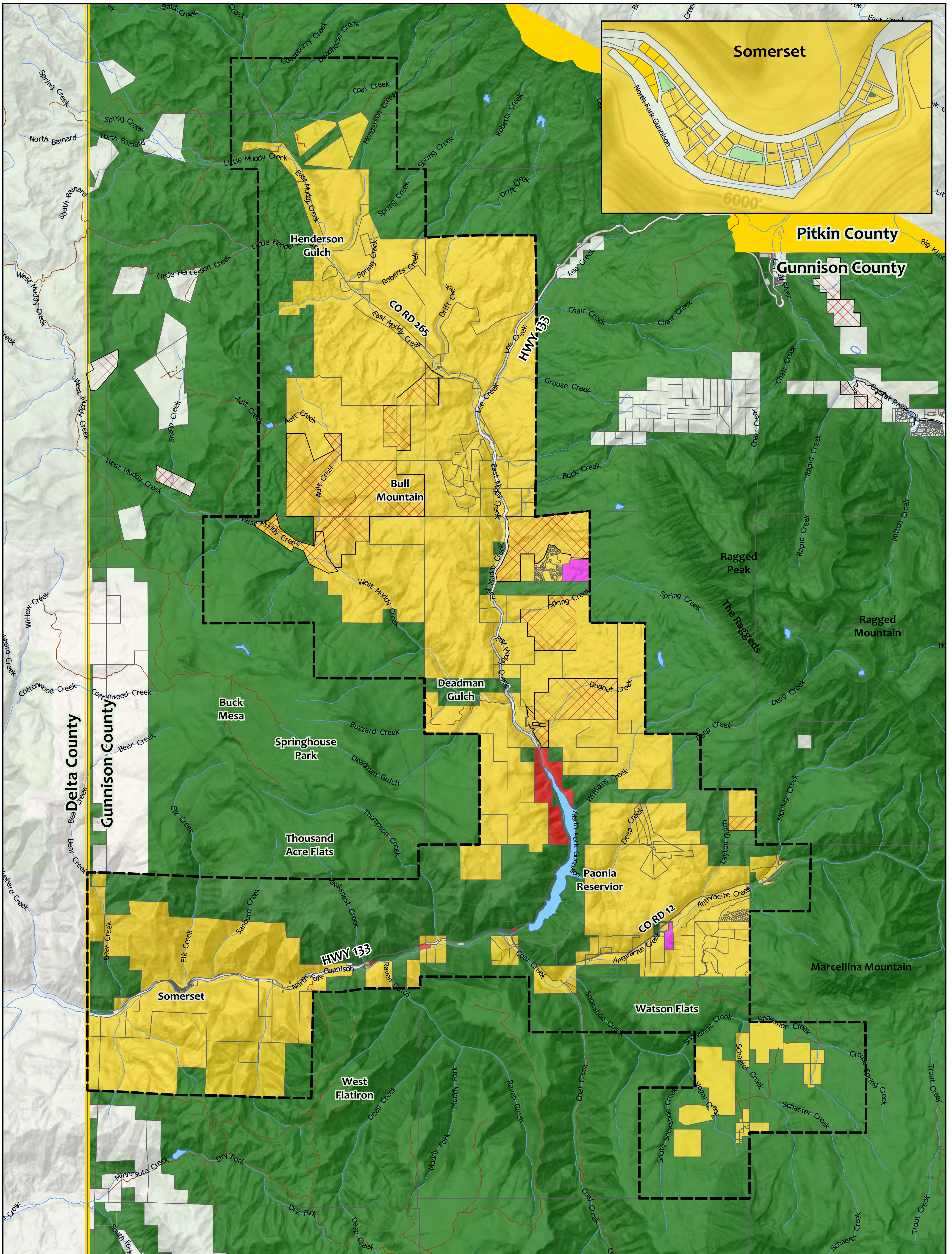
The data used for this map was obtained from various sources including Gunnison County, FEMA, USGS, and others. The accuracy of this map is limited to the accuracy of the data obtained from the original sources.

**Legend**

-  Roads - USFS
-  Roads - County
-  HWY 133
-  Fire District Boundary
-  County Boundaries

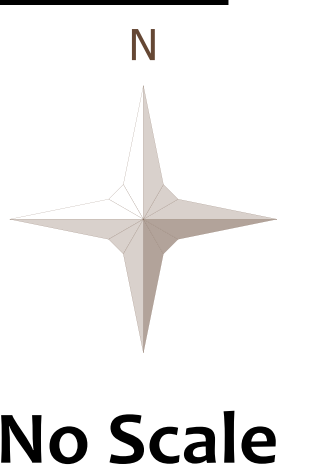


# Property Ownership Map



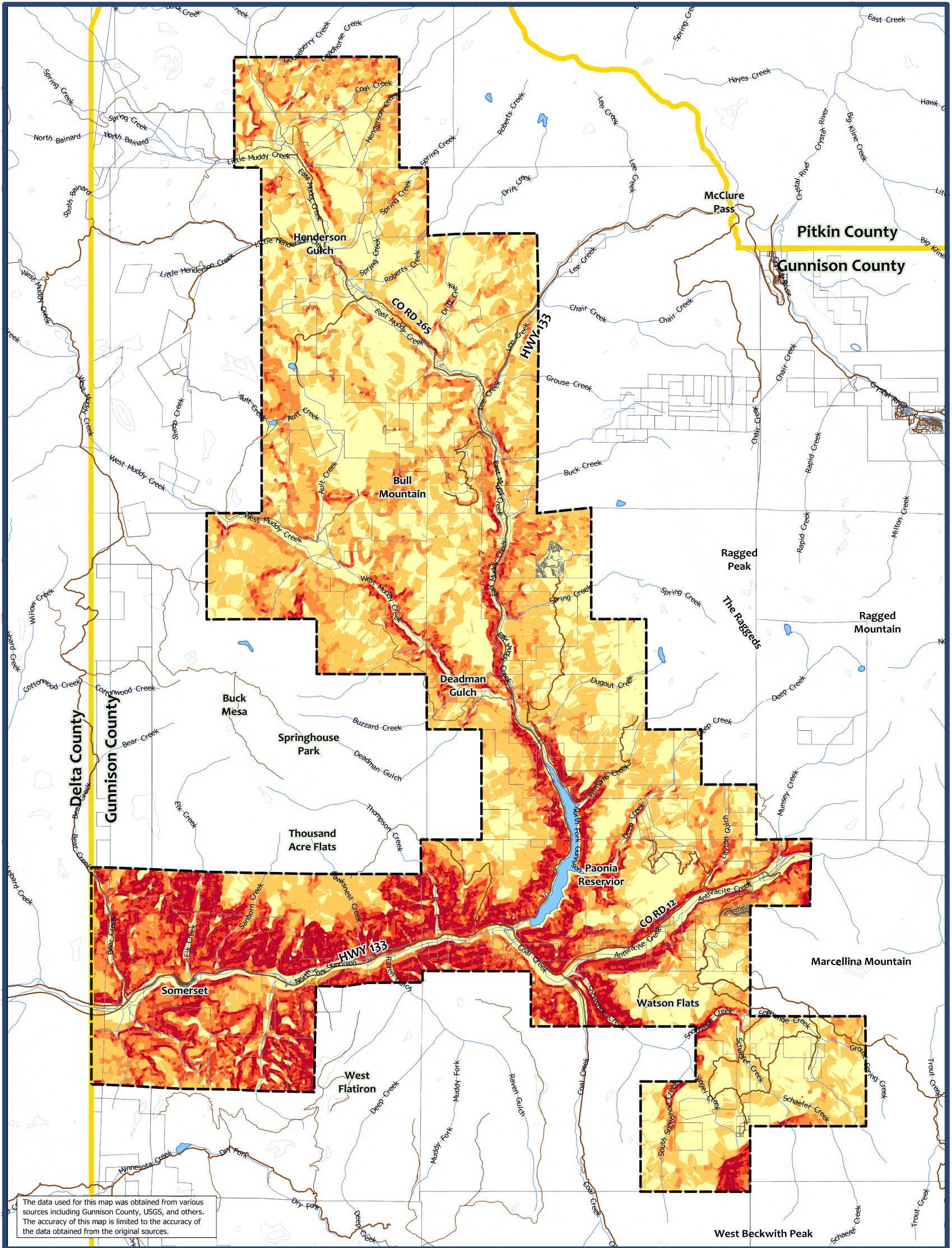
**Legend**

- Federal Government
- State of Colorado
- Gunnison County
- Other Exempt
- Private Land
- Conservation Easements
- Fire District Boundary
- County Boundaries





# Terrain Slopes Map



The data used for this map was obtained from various sources including Gunnison County, USGS, and others. The accuracy of this map is limited to the accuracy of the data obtained from the original sources.

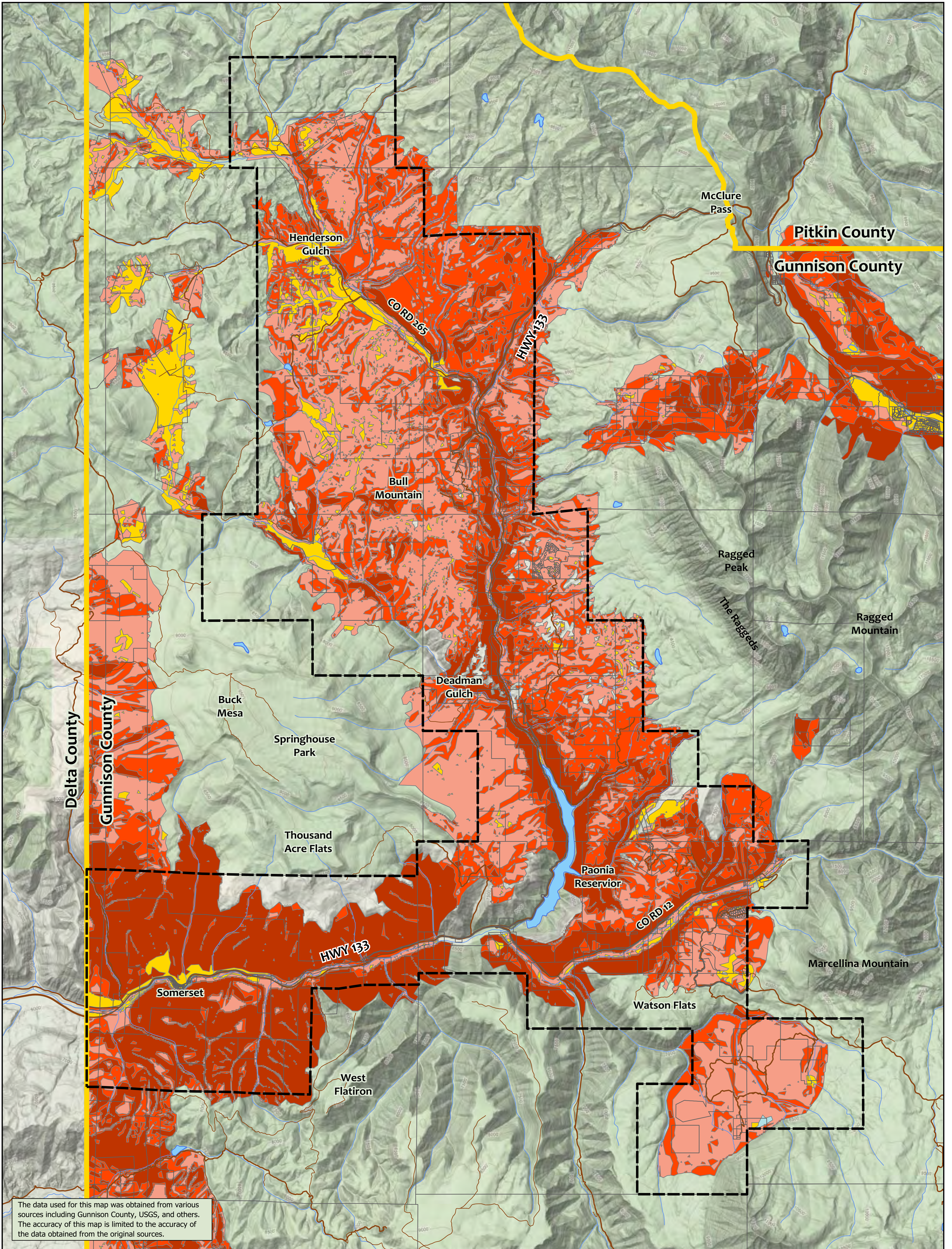
**Legend**

**Slopes**

- 0 - 15% (0 - 8.5 deg.)
- 15 - 30% (8.5 to 16.7 deg.)
- 30 - 45% (16.7 - 24.2 deg.)
- 45 - 60% (24.2 - 31.0 deg.)
- > 60% (> 31.0 deg.)









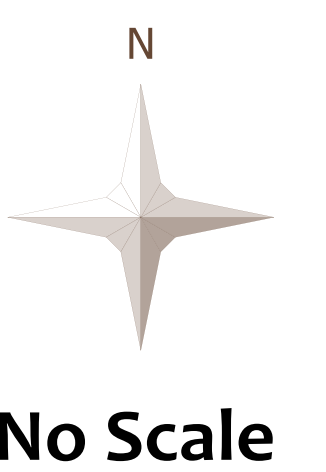
No Scale

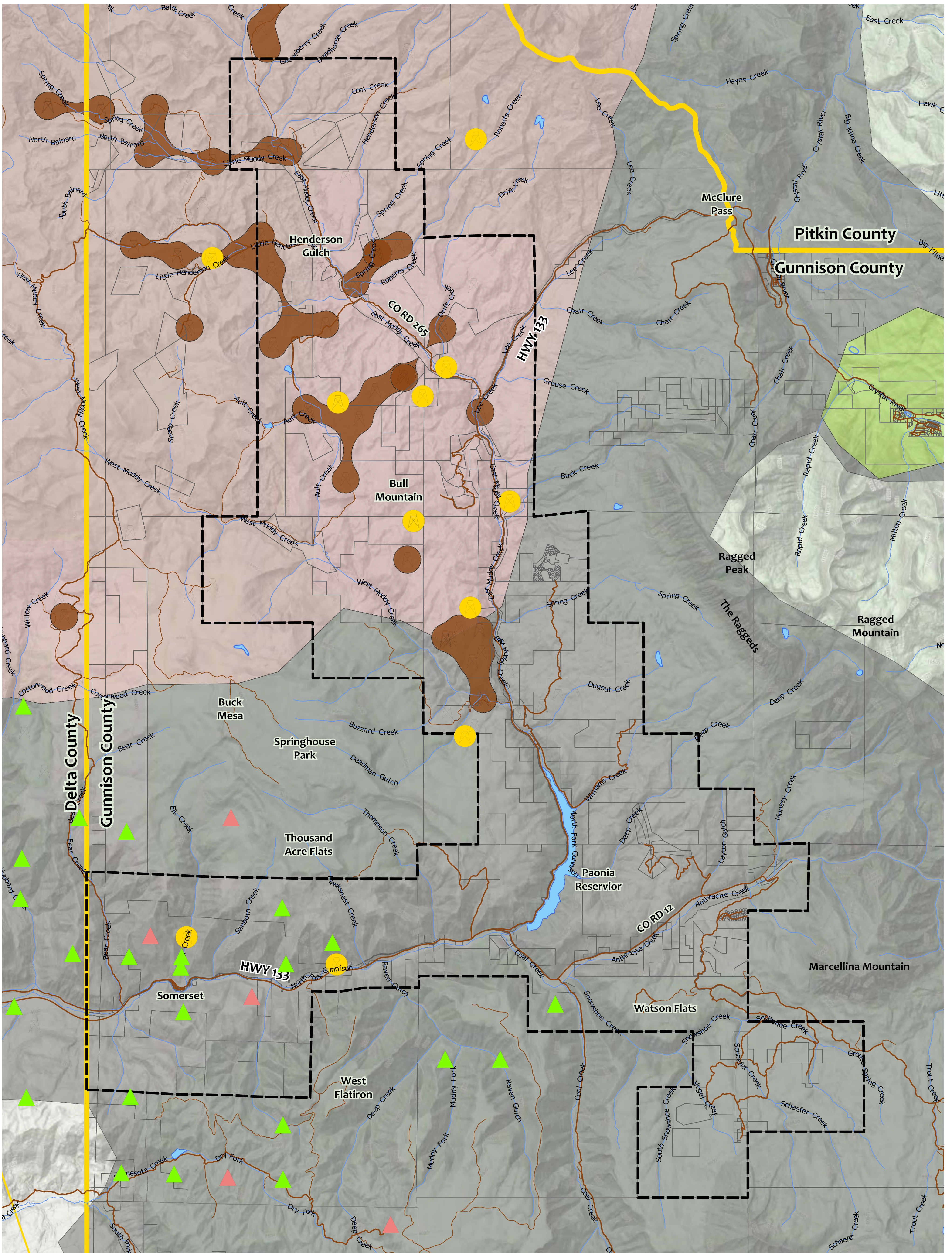


The data used for this map was obtained from various sources including Gunnison County, USGS, and others. The accuracy of this map is limited to the accuracy of the data obtained from the original sources.

**Legend**

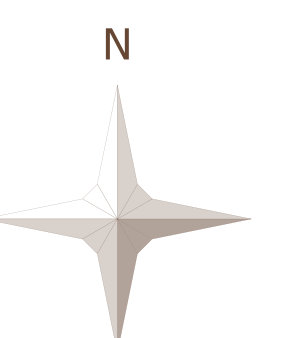
- |   |                 |   |                   |
|---|-----------------|---|-------------------|
|  | <b>EXTREME</b>  |  | <b>LOW</b>        |
|  | <b>HIGH</b>     |  | <b>NONE</b>       |
|  | <b>MODERATE</b> |  | <b>NOT MAPPED</b> |





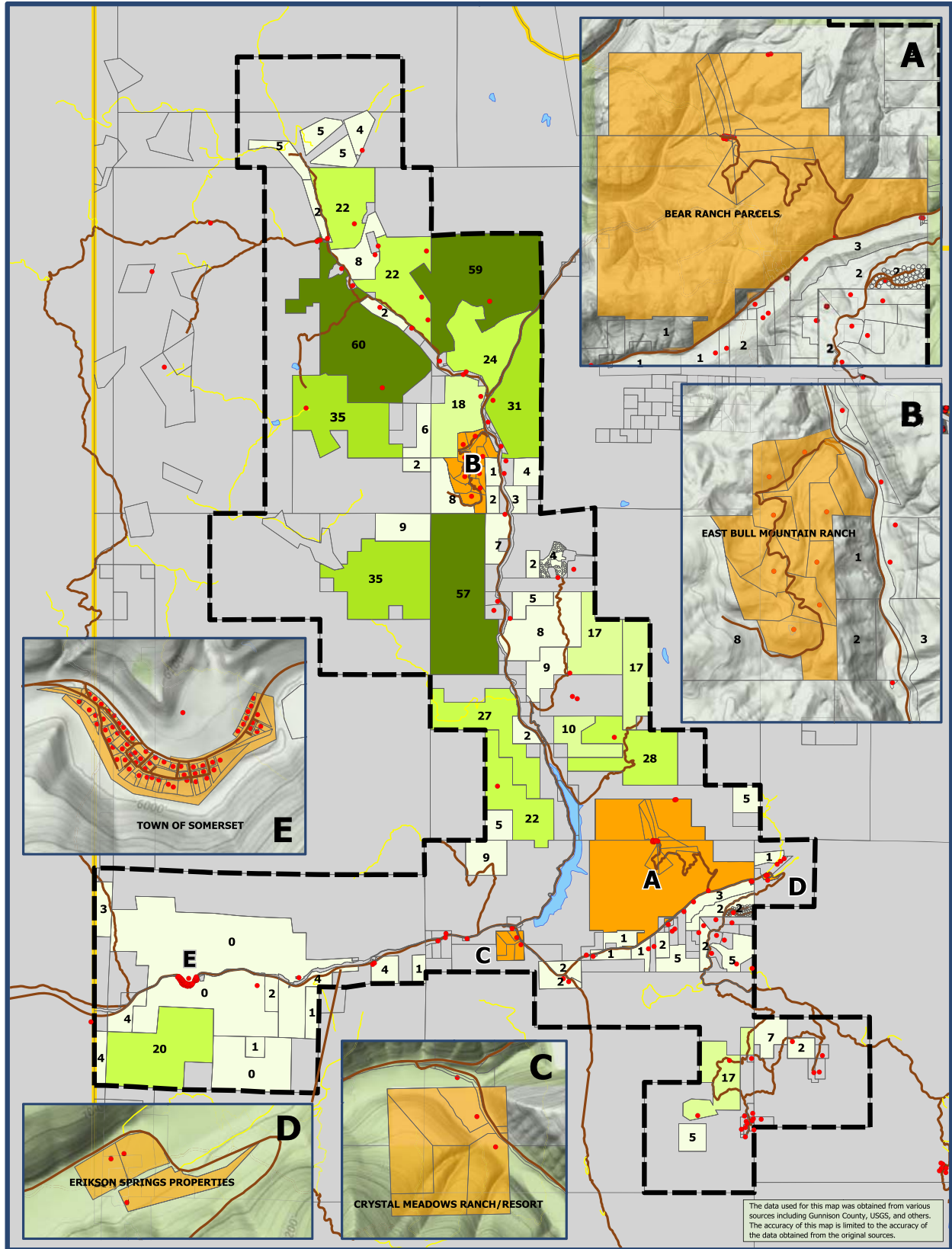
**Legend**

- Oil & Gas Permits (COGCC)
- Oil & Gas Fields (COGCC)
- Fire District Boundary
- County Boundaries
- Wells (COGCC)
- Coal Mines (Active)
- Coal Mines (Inactive)
- Anthracite
- Bituminous (minable)
- Bituminous (other uses)
- No Scale

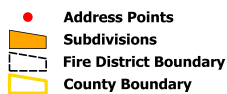




# Build-Out Map



## Legend



The data used for this map was obtained from various sources including Gunnison County, USGS, and others. The accuracy of this map is limited to the accuracy of the data obtained from the original sources.





## Preferred Service Needs Forecast

| Year                           | 3.0% Average Annual Growth Rate |
|--------------------------------|---------------------------------|
|                                | Annual Forecast                 |
| MEDICAL SERVICE CALL FORECAST  |                                 |
| <b>2013</b>                    | 15                              |
| <b>2023</b>                    | 20                              |
| <b>2033</b>                    | 27                              |
| FIRE SERVICE CALL FORECAST     |                                 |
| <b>2013</b>                    | 17                              |
| <b>2023</b>                    | 23                              |
| <b>2033</b>                    | 31                              |
| PERSONNEL UTILIZATION FORECAST |                                 |
| <b>2013</b>                    | 76                              |
| <b>2023</b>                    | 102                             |
| <b>2033</b>                    | 137                             |



## Facility Requirements

### EQUIPMENT

| Description                               | Quantity   |
|---|------------|
| COMMUNICATIONS EQUIPMENT                  |            |
| VHF Motorola Pagers                       | 12         |
| VHF Mobile Radios                         | 4          |
| VHF Portable Radios                       | 12         |
| Mountain Top Repeater                     | 1          |
| Base Station Radio with Station Antenna   | 1          |
| STATION EQUIPMENT                         |            |
| Breathing Air Compressor                  | 1          |
| Oxygen Cascade System                     | 1          |
| Station Hose 3"                           | 200'       |
| Station Hose 2.5"                         | 200'       |
| Station Hose 1.75"                        | 200'       |
| Spare Class B Foam                        | 30 gallons |
| Tool Chest & Basic Automotive Tool Set    | 1          |
| PERSONNEL FIRE EQUIPMENT                  |            |
| Structural PPE (coat & pants)             | 12         |
| Structural Helmet                         | 12         |
| Structural Boots                          | 12         |
| Structural Gloves                         | 12         |
| Nomex Hood                                | 12         |
| Self Contained Breathing Apparatus (SCBA) | 6          |
| Individual SCBA Face Pieces               | 12         |
| Spare SCBA Bottles                        | 6          |
| Wildland Pants                            | 12         |
| Wildland Shirt                            | 12         |
| Wildland Gloves                           | 12         |
| Wildland Goggles                          | 12         |

### VEHICLES

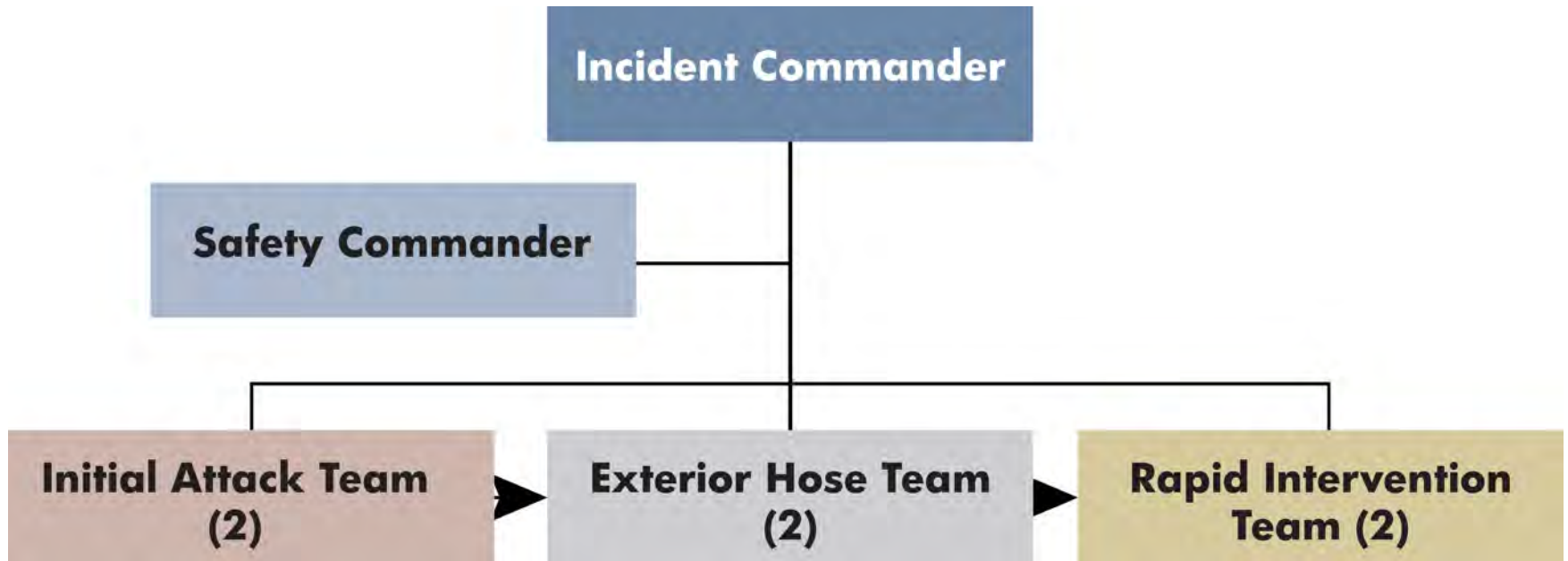
| Description                           | Quantity |
|---------------------------------------|----------|
| Class A Engine (Crew Cab 4x4)         | 1        |
| Water Tender Truck (1,800 gallon 4x4) | 1        |
| Rescue Squad (Suburban Type 4x4)*     | 1        |
| Type 6 Brush Truck                    | 1        |



**Facility Requirements  
Regulatory Standards**

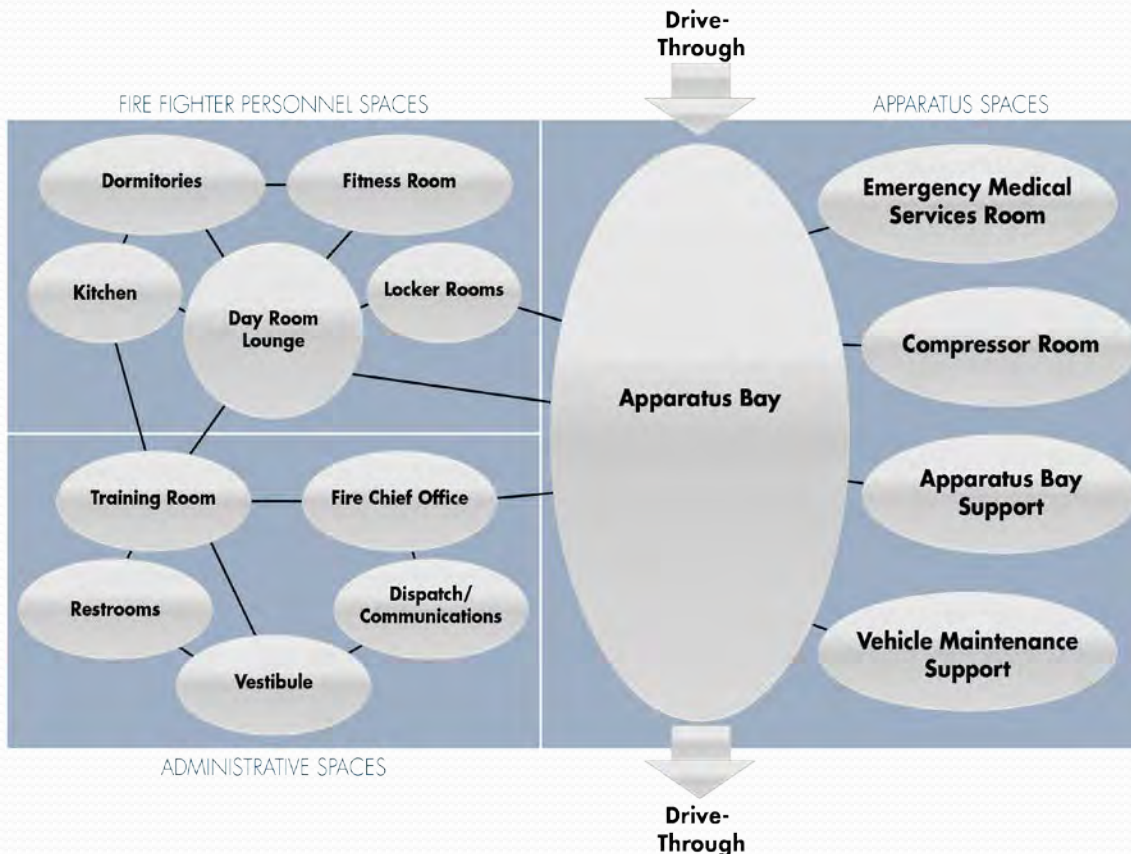
- ▶ **National Fire Protection Association (NFPA)**
  - NFPA 450: Guide for Emergency Medical Services and Systems
  - NFPA 1500: Standard on Fire Department Occupational Safety and Health Program
  - NFPA 1720: Standard for the Organization and Deployment of Fire Suppression Operations, Emergency Medical Operations, and Special Operations to the Public by Volunteer Fire Departments
  - NFPA 1851: Standard on Selection, Care, and Maintenance of Protective Ensembles for Structural Fire Fighting and Proximity Fire Fighting
  - NFPA 1901: Standard for Automotive Fire Apparatus
- ▶ **Insurance Services Office (ISO) Public Protection Classification (PPC™) Program Fire Suppression Rating Schedule (FSRS)**
- ▶ **Colorado Department of Public Health and Environment (CDPHE) for Health Facilities and Emergency Medical and Trauma Care System**
  - Code 6 CCR 1015-3, Emergency Medical Services
  - Code 6 CCR 1015-4, Statewide Emergency Medical and Trauma Care System

## Facility Requirements Minimum Response Team





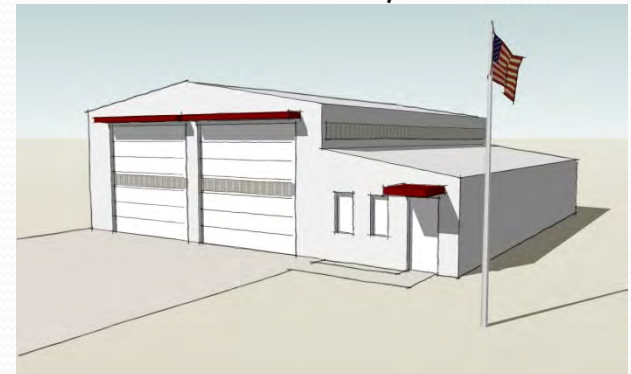
# Fire Station Space Program



Main Station – 7,064 SF



Substation – 2,600 SF



<http://sites.jviation.com/rgm/index.htm>



# Alternatives

## • Alternative 1

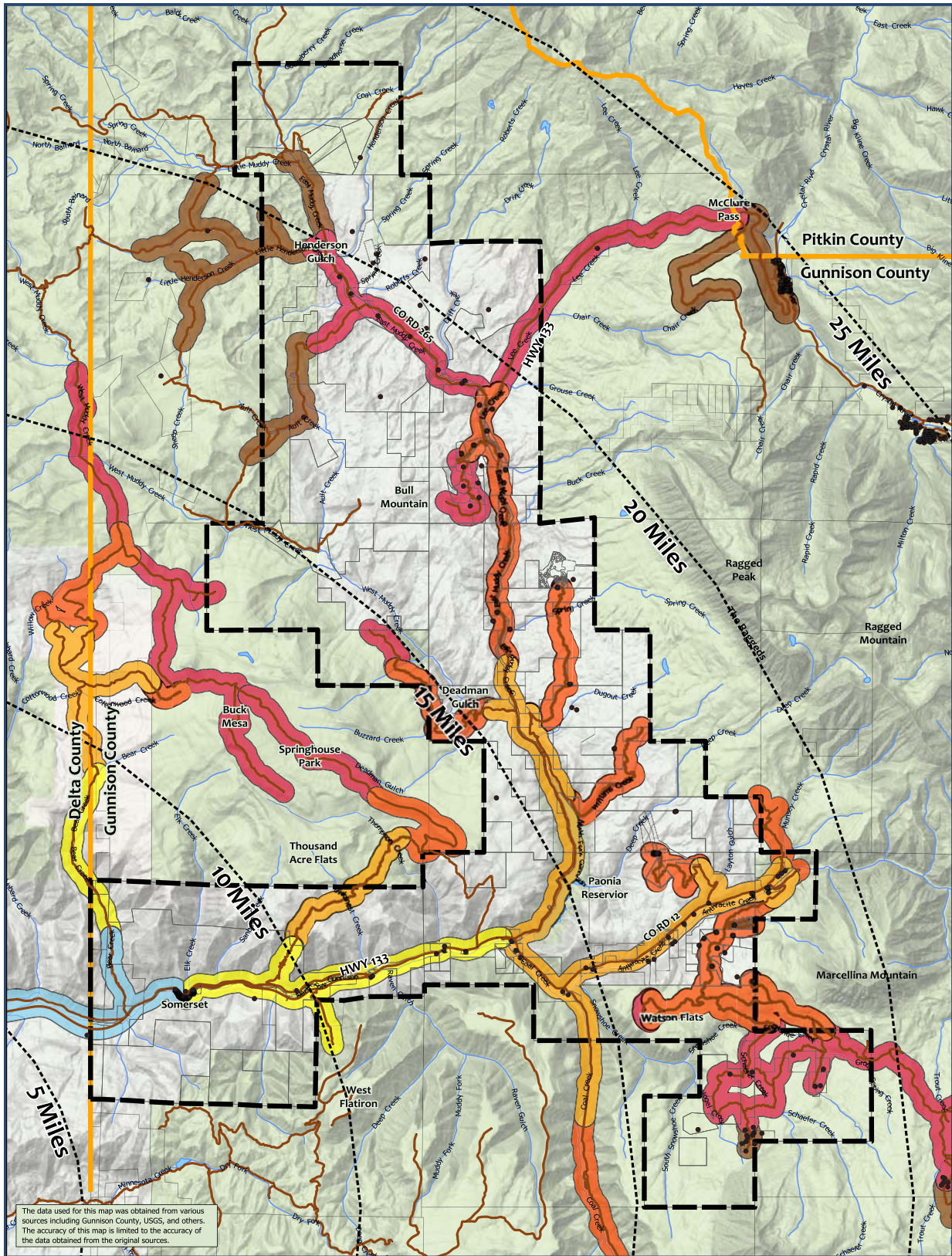
- Status quo
- Continue fire service as a pass-through District to Delta County Fire Protection District #2 (Paonia)
- Continue ambulance service provided by North Fork Ambulance Association

## • Alternative 5

- ***Eliminated from consideration; not financially viable***
- Alternative 5A
  - All paid staff (1 paid fire chief + 5 paid firefighter FTE positions)\*
  - Main station
- Alternative 5B
  - All paid staff (1 paid fire chief + 5 paid firefighter FTE positions)\*
  - Main station + substation

*\*All firefighters will be trained as Medical First Responder*

# Option A: Status Quo



The data used for this map was obtained from various sources including Gunnison County, USGS, and others. The accuracy of this map is limited to the accuracy of the data obtained from the original sources.

**Legend**

- 12 Minutes (from Paonia)
- 20-Minute Zone
- 30-Minute Zone
- 40-Minute Zone
- 50-Minute Zone
- 60-Minute Zone
- Address Points
- Road Network
- District Boundary
- County Boundary





# Alternatives

- **Alternative 2A**

- 1 volunteer fire chief + 5 volunteer firefighter positions\*
- Main station
- All training provided by the District

- **Alternative 3A**

- 1 paid fire chief + 5 volunteer firefighter positions\*
- Main station
- All training provided by the District

- **Alternative 4A**

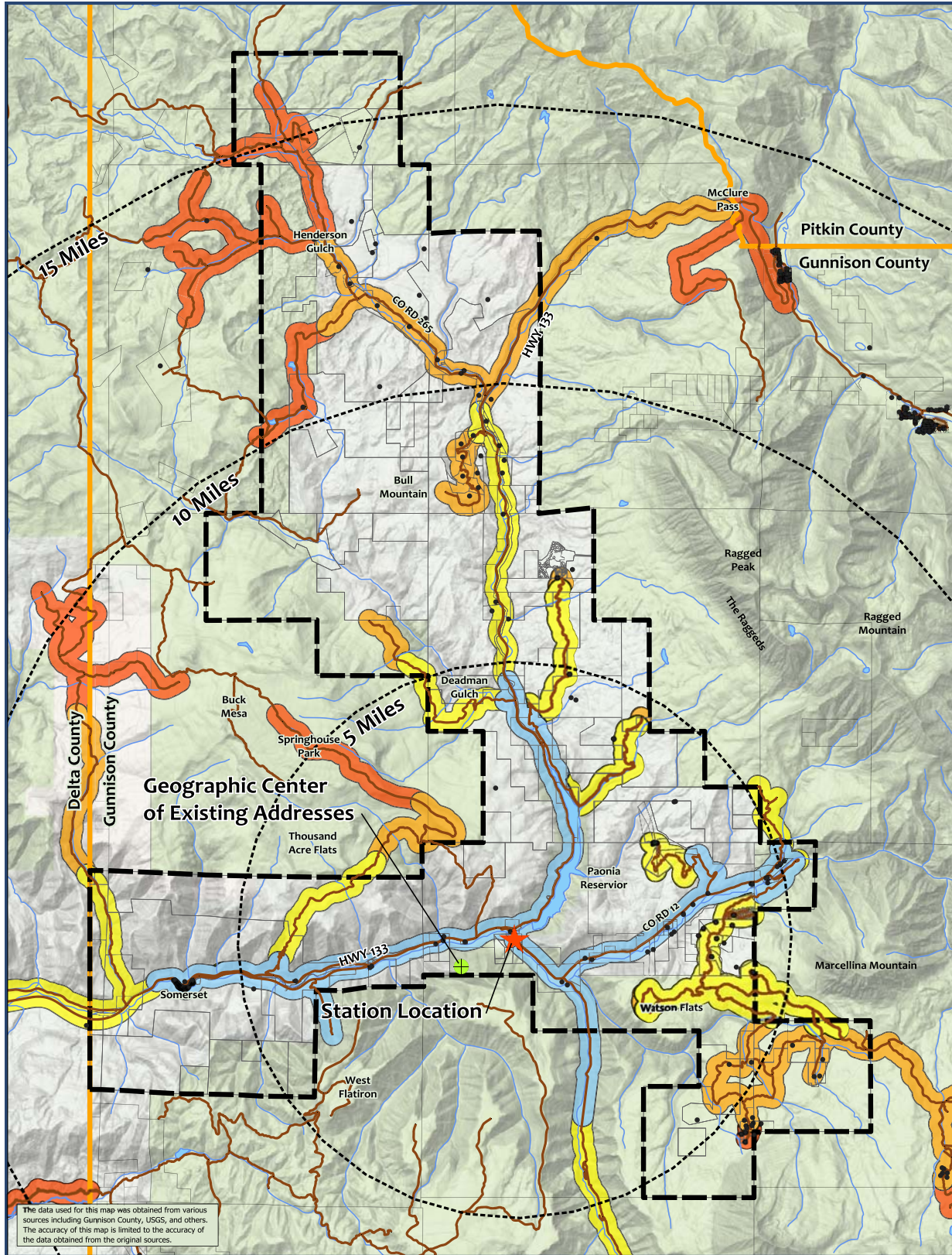
- 1 paid fire chief
- 1 paid firefighter position to cover two 8-hour shifts (= 4 full time equivalents) + 1 volunteer position to cover one daily shift\*
- Main station
- All training provided by the District

*\*All firefighters will be trained as Medical First Responder*





## Option B1: Single Station (South)



The data used for this map was obtained from various sources including Gunnison County, USGS, and others. The accuracy of this map is limited to the accuracy of the data obtained from the original sources.

**Legend**

- ★ Station Location
- Address Points
- Road Network
- - - District Boundary
- ▭ County Boundary
- ▭ 10-Minute Drive Zone
- ▭ 20-Minute Drive Zone
- ▭ 30-Minute Drive Zone
- ▭ 40-Minute Drive Zone





# Alternatives

- **Alternative 2B**

- 1 volunteer fire chief + 5 volunteer firefighter positions\*
- Main station + substation
- All training provided by the District

- **Alternative 3B**

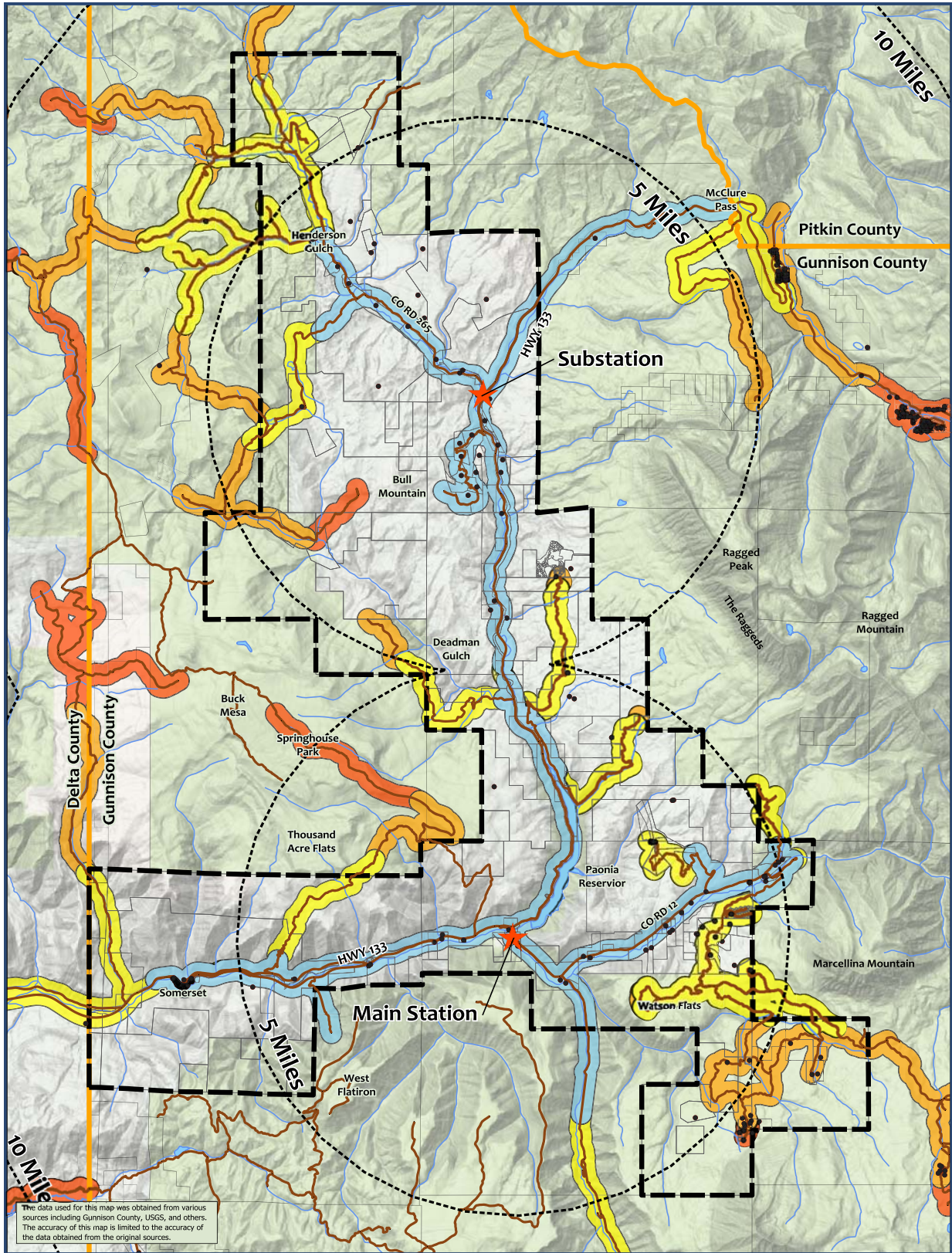
- 1 paid fire chief + 5 volunteer firefighter positions\*
- Main station + substation
- All training provided by the District

- **Alternative 4B**

- 1 paid fire chief
- 1 paid firefighter position to cover 2 daily shifts (= 4 full time equivalents) + 1 volunteer position to cover one daily shift\*
- Main station + substation
- All training provided by the District

*\*All firefighters will be trained as Medical First Responder*

# Option C: Two Stations



The data used for this map was obtained from various sources including Gunnison County, USGS, and others. The accuracy of this map is limited to the accuracy of the data obtained from the original sources.

**Legend**

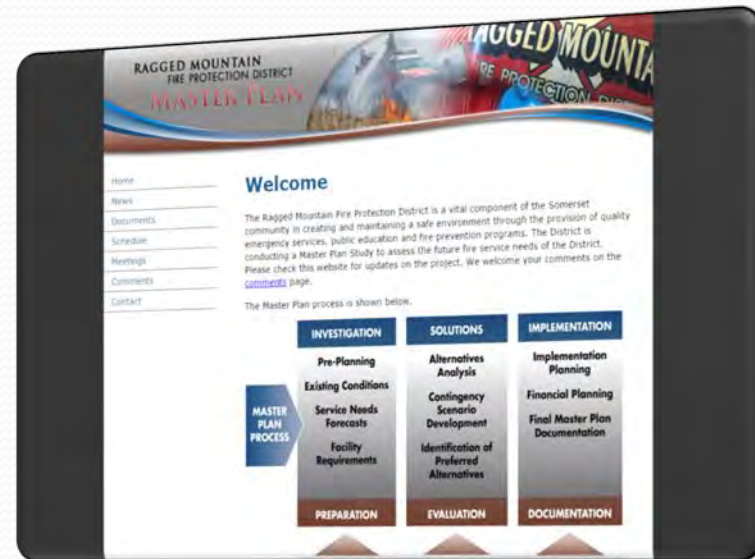
- ★ Station Location
- Address Points
- Road Network
- District Boundary
- County Boundary
- 10-Minute Drive Zone
- 20-Minute Drive Zone
- 30-Minute Drive Zone
- 40-Minute Drive Zone



# Public Outreach



- Website
- Resident Surveys
- Kitchen Chats
- Stakeholder Meetings
- Community Open House



# Next Steps



- **Ongoing Public Outreach**
  - All documents to date can be viewed at:  
<http://sites.jviation.com/rgm/index.htm>
- **Initiation of Capital Improvement Plan (CIP) & Financial Implementation Plan**
  - Financial Information Analysis
  - Prepare Cost Estimates
  - Prioritize CIP Projects
  - Financial Implementation Plan