



ALABAMA STATEWIDE AIRPORT SYSTEM PLAN & ECONOMIC IMPACT STUDY

Kickoff Meeting

October 9, 2018

WELCOME

Project Team



Previous Studies

- 2005 Statewide Airport System Plan & Economic Impact Study
- 2010 Airport Pavement Maintenance Program

Today's Agenda

- **Overview of study and benefits**
- **Overview of study objectives**
- **Synopsis of major study elements**
- **Where we are in the process**
- **How you can help**
- **Next steps**

ALABAMA STATEWIDE PLANNING EFFORTS

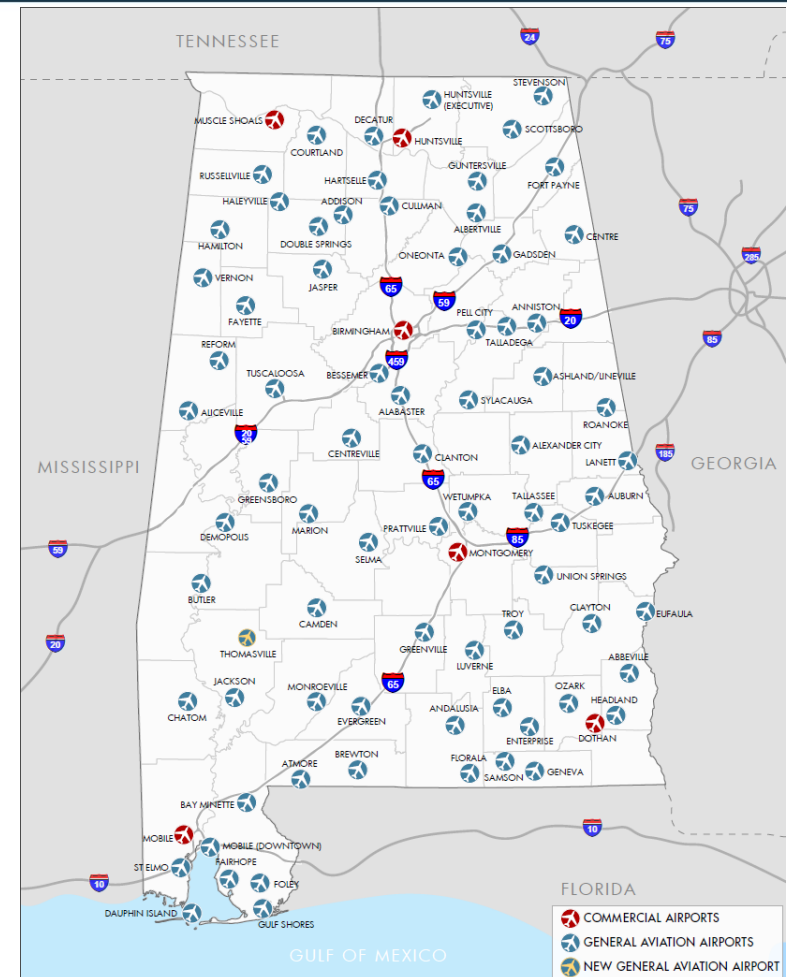
- **Airport System Plan**
 - Developing today's Airport System to meet the needs of tomorrow
- **Economic Impact Study**
 - Recognizing the Airport System's benefits to community economies and quality of life
- **Pavement Management Study**
 - Preserving the valuable asset that is the Alabama Airport System

Project Sponsor: ALDOT Aeronautics Bureau

Project Team: Aviation, All About Pavements, MaesAwyr, Marr/Arnold Planning, Auburn University, Gen XI Productions

WHO BENEFITS?

- **Our Airport System**
 - 82 Public Use Airports
 - 6 Commercial Air Service
 - 76 General Aviation
- **Your Airport**
 - Integrated planning data
 - Effective tools to tell the story of your airport
 - Pavement Management
- **ALDOT Aeronautics Bureau**
 - Partnering with our system sponsors for a bright future



AIRPORT SYSTEM PLANNING

STUDY OBJECTIVES

- Help ensure that Alabama has a balanced, viable, and sustainable airport system today and tomorrow
- Provide information to feed into FAA's national airports plan (NPIAS)
- Refresh/expand data of ALDOT Aeronautics Bureau's Airport System Plan
- Construct a framework for identifying investment needs and providing rationale for funding decisions
- Prepare information that documents contributions and importance of study airports

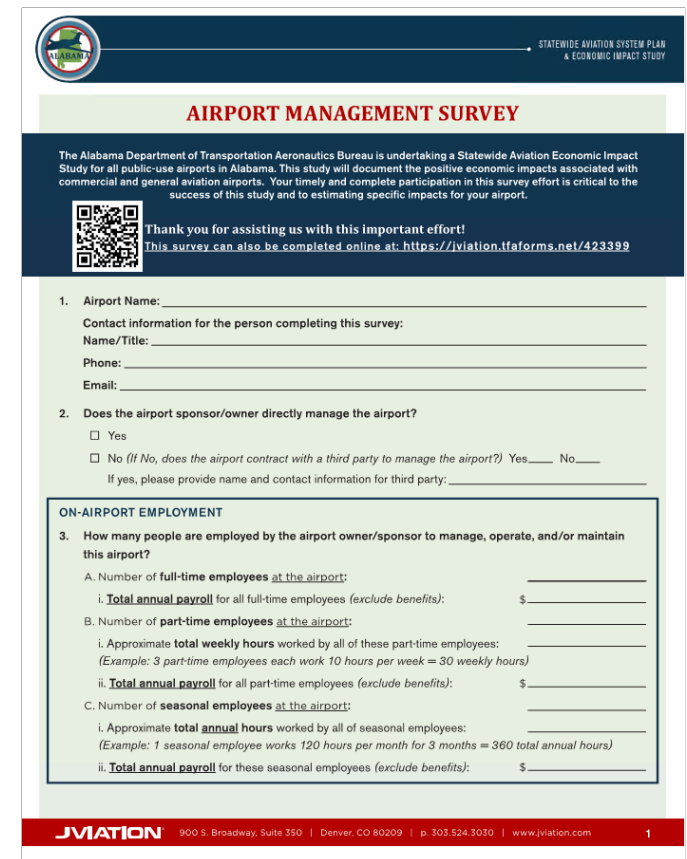
OVERVIEW OF THE SYSTEM PLANNING PROCESS



AIRPORT SYSTEM PLAN –

INVENTORY


- Multiple survey efforts
 - Airport Manager System Plan Survey
 - Airport Manager Economic Impact Survey
 - Airport Tenant Surveys
 - GA Passenger Surveys
 - Commercial Air Service Passenger Surveys
- All airports 82 public use study airports contacted – 71 airport visits
- Data collected for airport facilities, services, activities (including FAA databases), as well as economic impact indicators
- Information collected to “tell the story of your airport”



STATEWIDE AVIATION SYSTEM PLAN & ECONOMIC IMPACT STUDY

AIRPORT MANAGEMENT SURVEY

The Alabama Department of Transportation Aeronautics Bureau is undertaking a Statewide Aviation Economic Impact Study for all public-use airports in Alabama. This study will document the positive economic impacts associated with commercial and general aviation airports. Your timely and complete participation in this survey effort is critical to the success of this study and to estimating specific impacts for your airport.



Thank you for assisting us with this important effort!
This survey can also be completed online at: <https://aviation.tfaforms.net/423399>

1. Airport Name: _____
Contact information for the person completing this survey:
Name/Title: _____
Phone: _____
Email: _____

2. Does the airport sponsor/owner directly manage the airport?
 Yes
 No (If No, does the airport contract with a third party to manage the airport?) Yes ____ No ____
If yes, please provide name and contact information for third party: _____

ON-AIRPORT EMPLOYMENT

3. How many people are employed by the airport owner/sponsor to manage, operate, and/or maintain this airport?

A. Number of **full-time employees at the airport**: _____
i. **Total annual payroll** for all full-time employees (exclude benefits): \$ _____

B. Number of **part-time employees at the airport**: _____
i. Approximate **total weekly hours** worked by all of these part-time employees:
(Example: 3 part-time employees each work 10 hours per week = 30 weekly hours)
ii. **Total annual payroll** for all part-time employees (exclude benefits): \$ _____

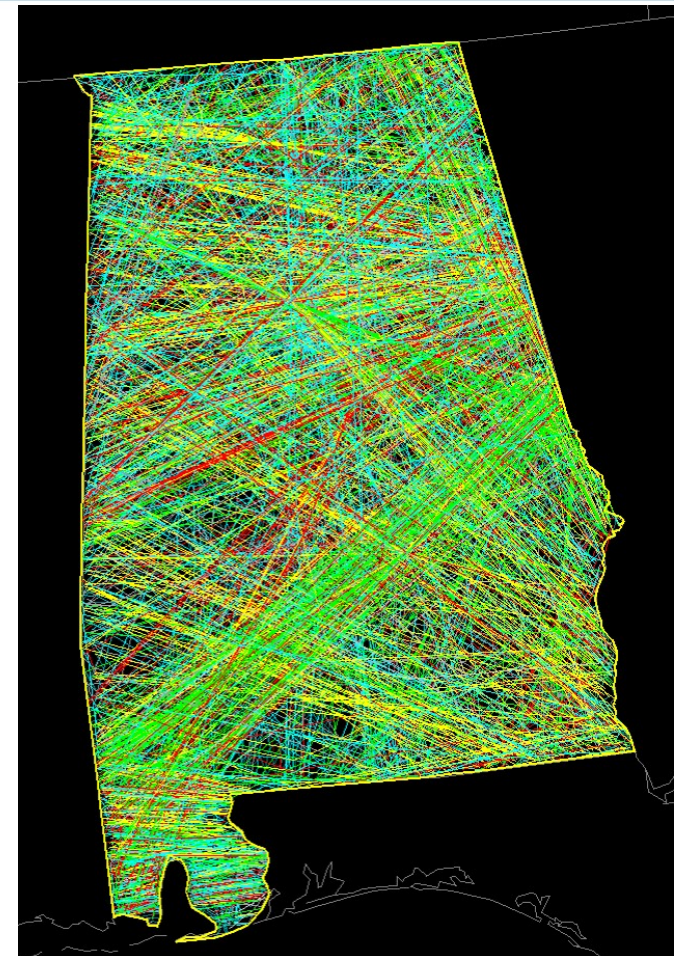
C. Number of **seasonal employees at the airport**: _____
i. Approximate **total annual hours** worked by all of seasonal employees:
(Example: 1 seasonal employee works 120 hours per month for 3 months = 360 total annual hours)
ii. **Total annual payroll** for these seasonal employees (exclude benefits): \$ _____

AVIATION 900 S. Broadway, Suite 350 | Denver, CO 80209 | p. 303.524.3030 | www.jviation.com 1

AIRPORT SYSTEM PLAN –

FORECAST

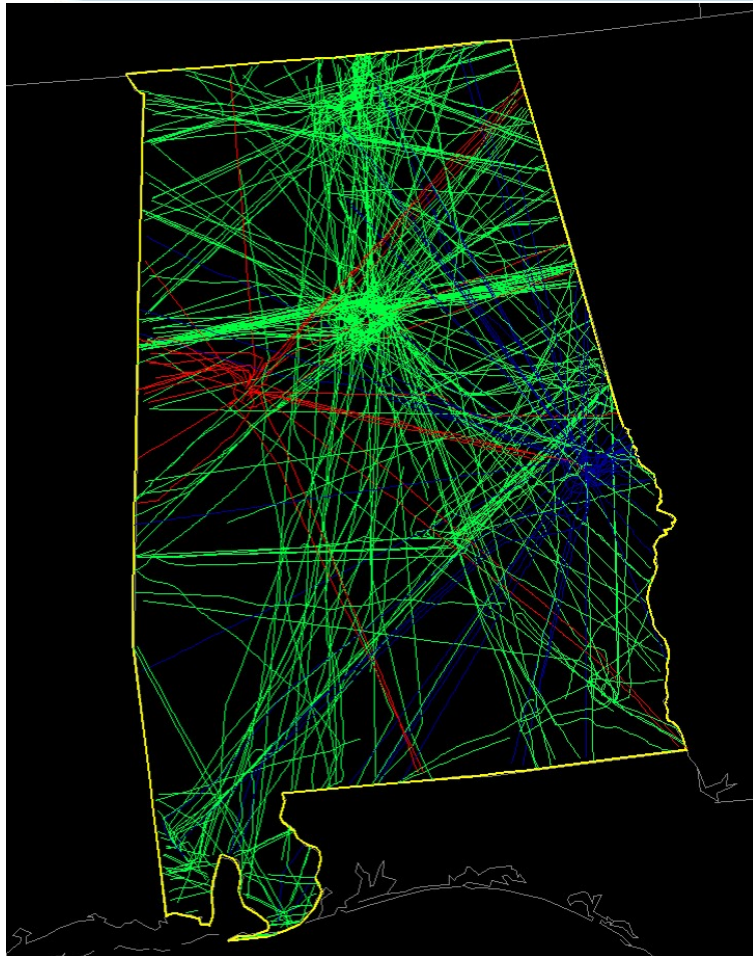
- 5- and 10-year demand forecasts will consider historic trends and overlaps in airport service areas
- Current and emerging aviation trends and issues will be identified and explored for their potential to impact future operational patterns
- Primary forecasting metrics (i.e., based aircraft, annual aircraft operations, critical design aircraft)
- Employment of FAA Databases
 - 5010
 - TAF
 - Basedaircraft.com
 - National Offload Program (NOP) data



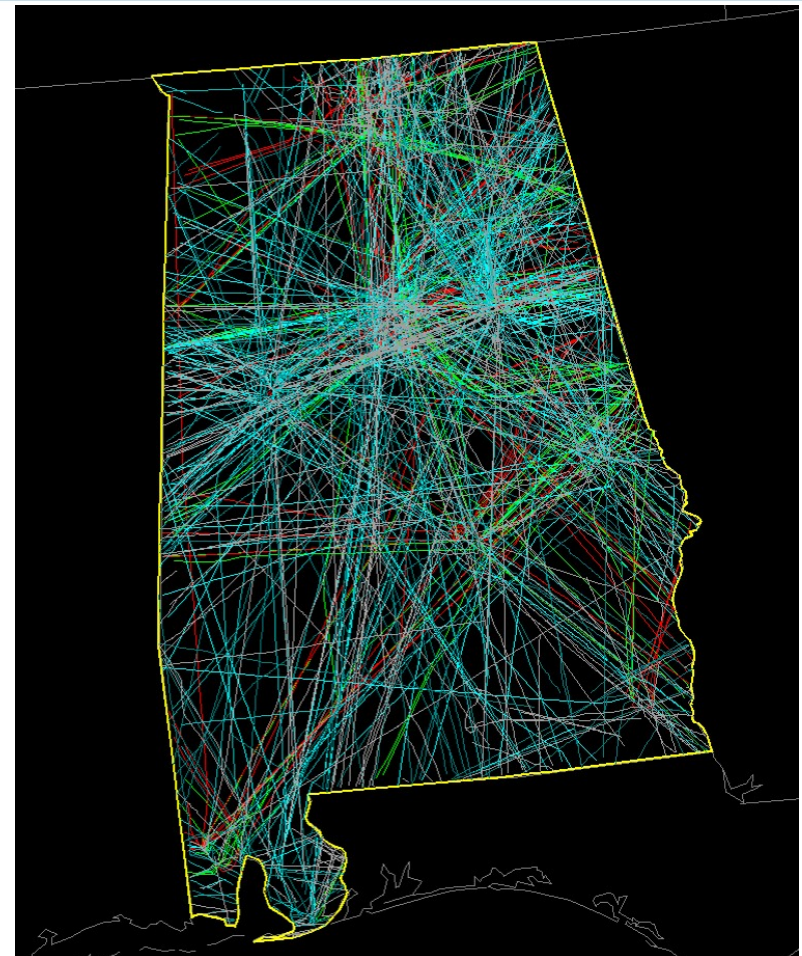
Sunday, July 17, 2016 (All flights)

AIRPORT SYSTEM PLAN –

FORECAST



Sept 2, 2016 USC at Alabama; Clemson at Auburn (AL flights)



Oct 23, 2016 Talladega 500 NASCAR (AL flights)

AIRPORT SYSTEM PLAN –

SYSTEM PERFORMANCE

- Performance measures to establish current system performance
- Evaluation identifies any system deficiencies
- Projects/actions address system noted gaps form recommended plan



AIRPORT SYSTEM PLAN – SYSTEM PERFORMANCE EVALUATION FACTORS

- Accessibility to Commercial Airline Service
 - *(example) 60-minute accessibility to Alabama airport with scheduled airline service*
- Accessibility to a Public Use Airport
 - *(example) 30-minute accessibility to any Alabama airport*
- Accessibility to Airports with NBAA Business Airport Characteristics
 - *(example) 45-minute accessibility to Alabama airports meeting NBAA business airport characteristics for Medium Business Jets*
- Accessibility to Airports with Approach Procedures
 - *(example) 30-minute accessibility to Alabama airports with precision like approach (ILS or LPV)*

AIRPORT SYSTEM PLAN –

AIRPORT ROLES

- Airports currently assigned to one of five roles:
 - International
 - National
 - GA Regional
 - GA Community
 - Local
- Role changes to address gaps or inconsistencies with FAA ASSET roles
- Evaluation to provide facilities/services commensurate with final system role



AIRPORT SYSTEM PLAN –

RECOMMENDATIONS

- Airport improvements needed to enhance the system
- Consolidation of funding needs CIPs, system plan projects, pavement maintenance
- Tools to facilitate uniform collection and prioritization of CIPs
- Airport Report Cards
- State role for air service retention



AIRPORT ECONOMIC IMPACT STUDY

STUDY OBJECTIVES

- Estimate economic impacts supported by 82 public use study airports
- Identify and quantify the value added employment benefits of aviation dependent jobs
- Estimate airport and airport supported tax revenues
- Tell the story of the Alabama airport system and that of its individual airports
- Provide effective tools and training for communicating this information for users and audiences

ECONOMIC IMPACT STUDY –

DIRECT IMPACTS



Airport management



Airport tenants



Capital investment



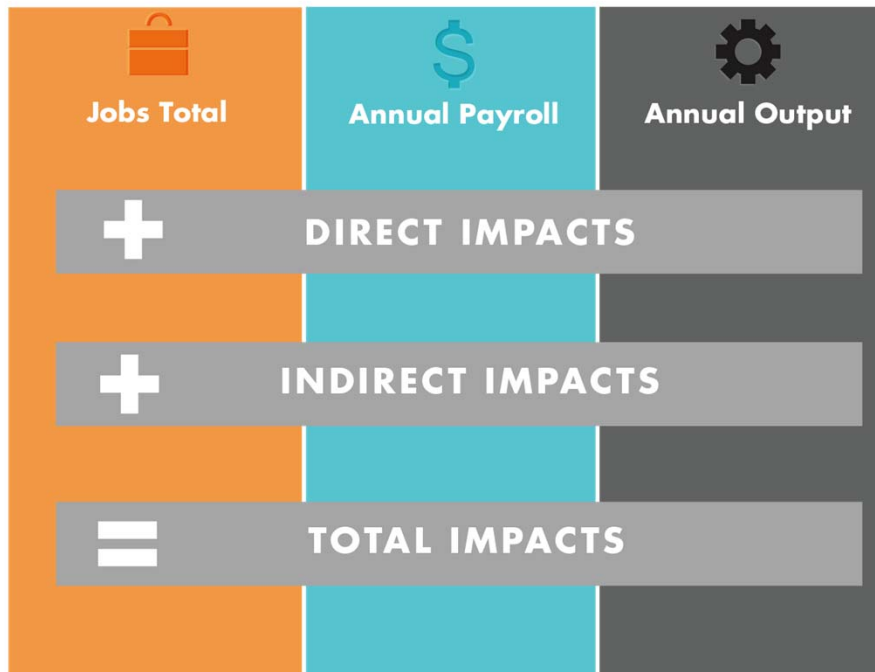
General aviation visitor spending



Commercial visitor spending

ECONOMIC IMPACT STUDY –

TOTAL IMPACTS



- Impacts estimated for employment, payroll, and output (spending)
- IMPLAN model used to estimate multiplier impacts
- Together direct and multiplier (indirect/induced) impacts yield total impacts

- Sales tax revenues
 - Visitor spending for hotels, food, rental cars, retail
 - Taxable portion of airport, tenant, and CIP spending for goods services and materials
 - Taxable spending related to direct jobs/payroll
- State income tax – payroll from all direct jobs supported by each airport



AIRPORT SYSTEM PLAN & ECONOMIC IMPACT STUDY – TOOLS & PRODUCTS

- Technical Reports
- Executive Summary
- Factsheet
- Individual Airport Reports
 - Summarizes airport role, demand outlook, facility and service needs, estimated development costs
 - Presents economic impact, uses and users, flight map
- Legislative District Reports
- Economic Impact Methodology Guide
- Face-to-Face Economic Impact Training
- Economic Impact Update Tool
- Video Summary

AIRPORT PAVEMENT MANAGEMENT PLAN

PLAN OBJECTIVES

- Provide an enhanced Statewide Airport Pavement Management Plan
- Conduct Pavement Condition Index (PCI) inspections and recommended pavement Capital Improvement Program (CIP) projects for all 59 General Aviation airports
- Provide a web-based tool that presents the results of the PMP on an airport-specific basis.

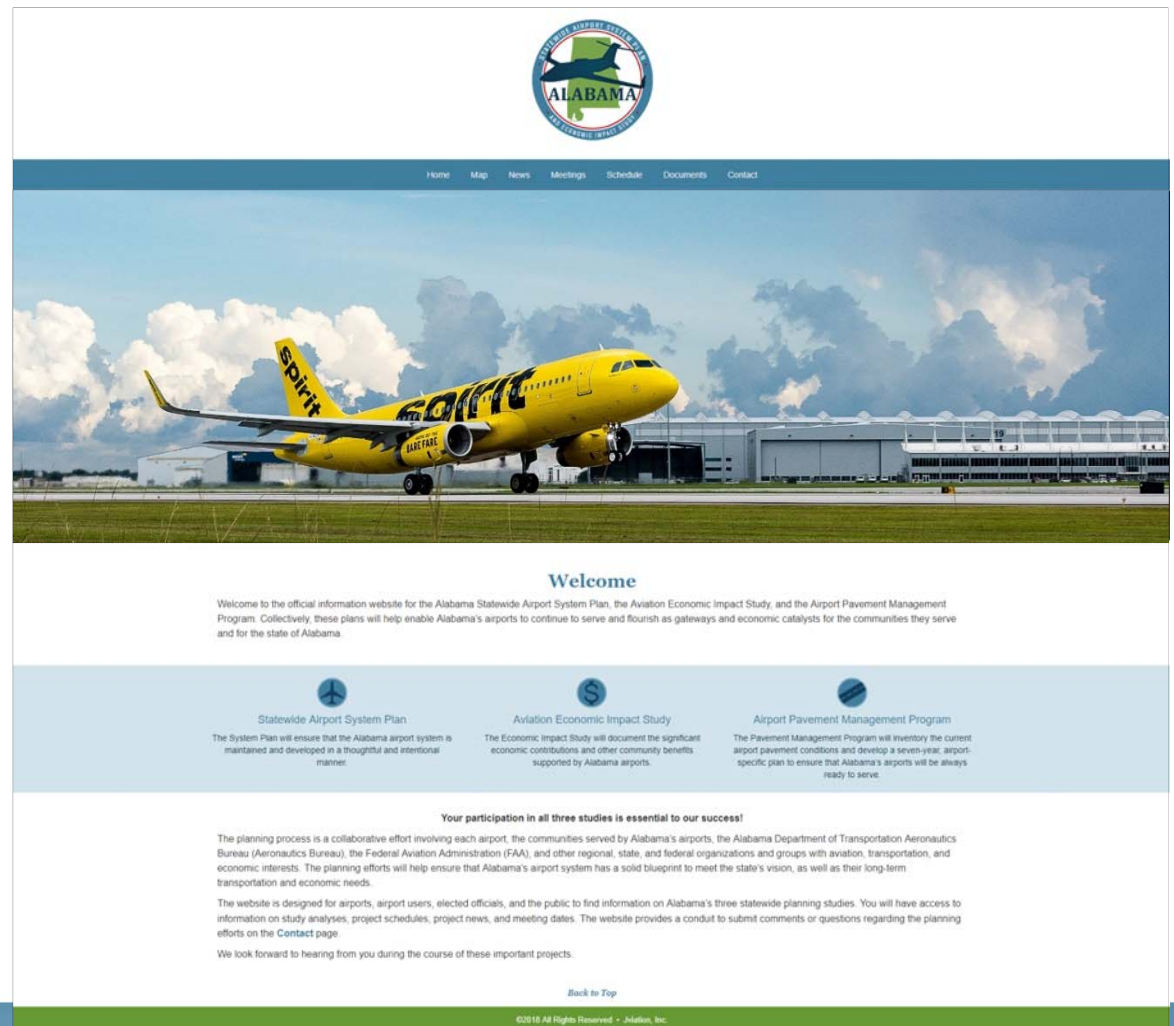
HOW YOU CAN HELP

- Work with our Project Team!
 - **Surveys** (airport managers, airport tenants, WiFi/online visitors, Pavement)
 - *Be responsive*
 - *Encourage your tenants*
 - **Interviews** (in-person visits, telephone follow-ups)
 - *Be responsive*
 - *Tell us your vision and the story of your airport*
 - **Engagement**
 - *Follow Us Online: www.aldot-airport-study.com*

HOW YOU CAN HELP

www.aldot-airport-study.com

- *Project Updates*
- *Meetings*
- *Documents*
- *Contact us*



ALABAMA
DEPARTMENT OF TRANSPORTATION

Home Map News Meetings Schedule Documents Contact

Welcome

Welcome to the official information website for the Alabama Statewide Airport System Plan, the Aviation Economic Impact Study, and the Airport Pavement Management Program. Collectively, these plans will help enable Alabama's airports to continue to serve and flourish as gateways and economic catalysts for the communities they serve and for the state of Alabama.

Statewide Airport System Plan
The System Plan will ensure that the Alabama airport system is maintained and developed in a thoughtful and intentional manner.

Aviation Economic Impact Study
The Economic Impact Study will document the significant economic contributions and other community benefits supported by Alabama airports.

Airport Pavement Management Program
The Pavement Management Program will inventory the current airport pavement conditions and develop a seven-year, airport-specific plan to ensure that Alabama's airports will be always ready to serve.

Your participation in all three studies is essential to our success!

The planning process is a collaborative effort involving each airport, the communities served by Alabama's airports, the Alabama Department of Transportation Aeronautics Bureau (Aeronautics Bureau), the Federal Aviation Administration (FAA), and other regional, state, and federal organizations and groups with aviation, transportation, and economic interests. The planning efforts will help ensure that Alabama's airport system has a solid blueprint to meet the state's vision, as well as their long-term transportation and economic needs.

The website is designed for airports, airport users, elected officials, and the public to find information on Alabama's three statewide planning studies. You will have access to information on study analyses, project schedules, project news, and meeting dates. The website provides a conduit to submit comments or questions regarding the planning efforts on the **Contact** page.

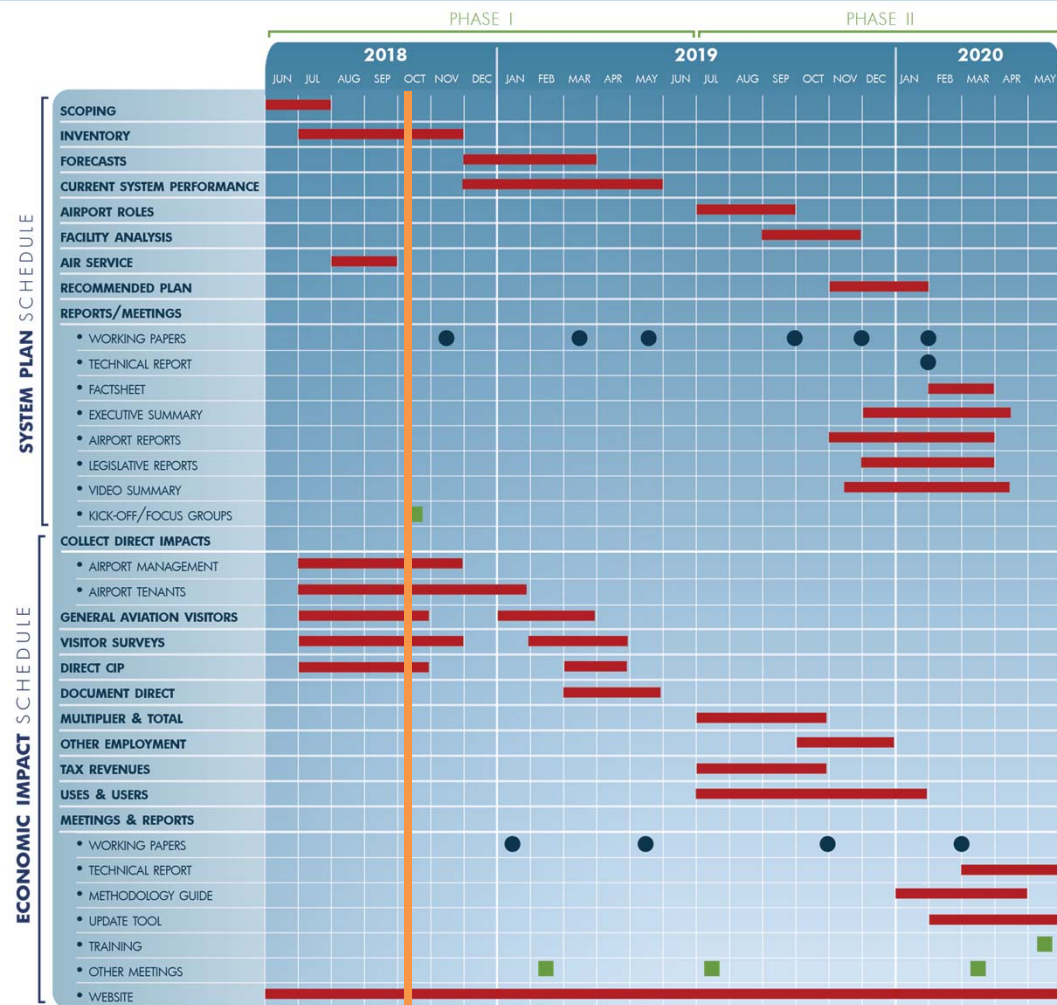
We look forward to hearing from you during the course of these important projects.

[Back to Top](#)

©2018 All Rights Reserved • JNation, Inc.

STATEWIDE AIRPORT SYSTEM PLAN
& ECONOMIC IMPACT STUDY

PROJECT SCHEDULE: System Plan / Economic Impact



PROJECT SCHEDULE: Pavement Management



NEXT STEPS

- Secure missing data from airport managers and tenants
- Continue visitor surveys
- Undertake current system performance analysis
- Move forward with demand forecasts
- Document direct impacts



THANK YOU!

Contacts:

- ALDOT Aeronautics Bureau Project Manager
 - **Frank Farmer**
Aeronautics Manager
(334) 242-6820
farmerf@dot.state.al.us
- Aviation Project Manager
 - **James Miklas**
(617) 320-0701
Jim.Miklas@Aviation.com

