



# Akron

COLORADO PLAINS REGIONAL AIRPORT

# MASTER PLAN



**JVIATION®**

# Today's Agenda

We will:

- Become familiar with
  - Elements of a Master Plan
  - The Master Plan Process
  - Update on Study Elements
  - Our Project Timeline & Next Steps
- Develop a forward-thinking vision for AKO



# Master Plan Elements

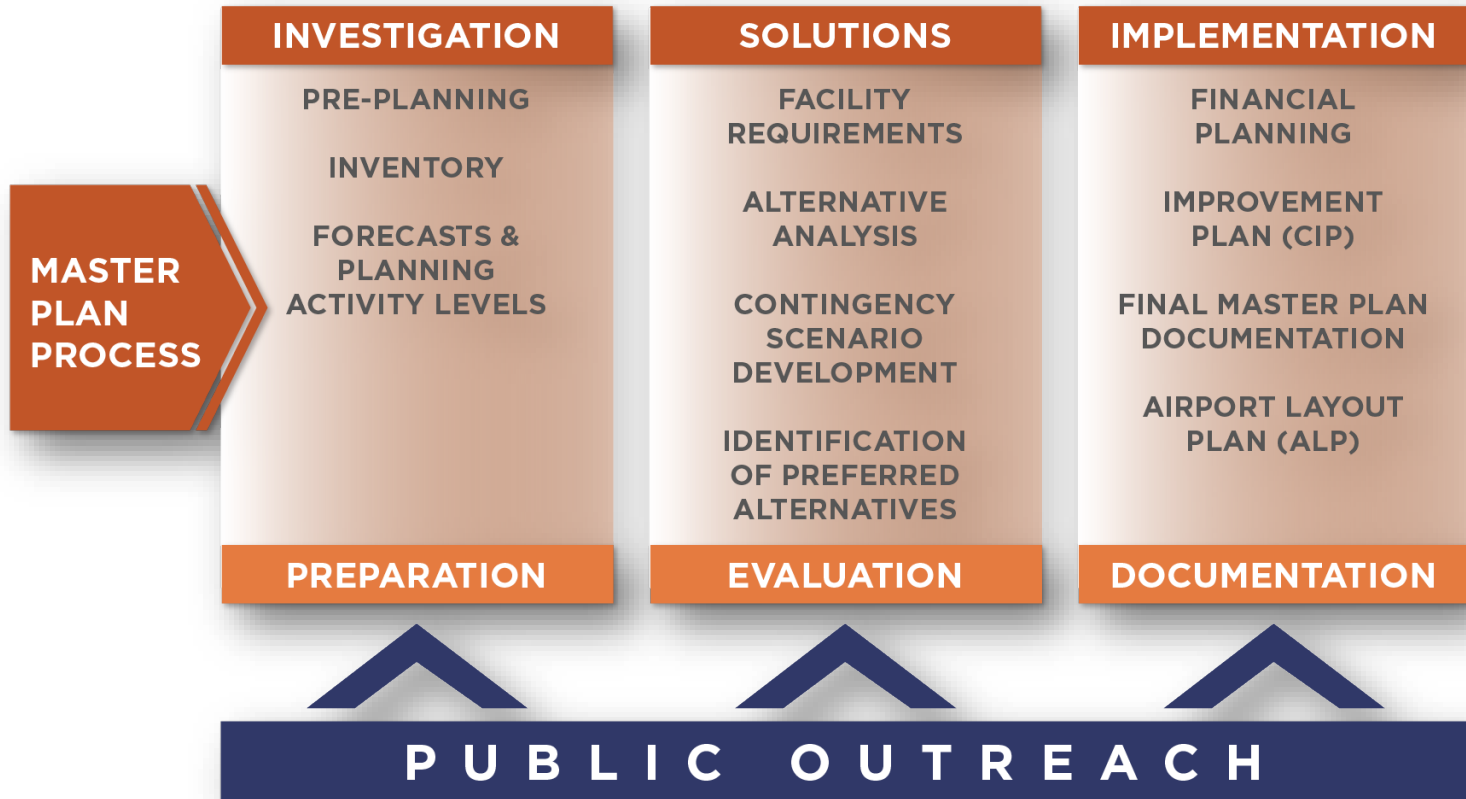
The Master Plan is a **20-year plan** to understand the needs of current and future users of the airport. This is important to ensure that **safe and orderly development** of the airport occurs in a manner that is **reflective of community values and goals**. This plan is developed through a **purposeful, inclusive and educational process**.



## Key Features

- Planning is not prejudicial or constrained – *no predetermined outcomes*
- Plan must be based on current conditions, community input, FAA design standards, and forecasts

# How We Master Plan...



# Visioning Exercise

**10-year** visioning to consider the opportunities that lay ahead and how they may **influence** how the Airport is **developed** and **operated** in the future.

**Vision Statement....**



# Inventory

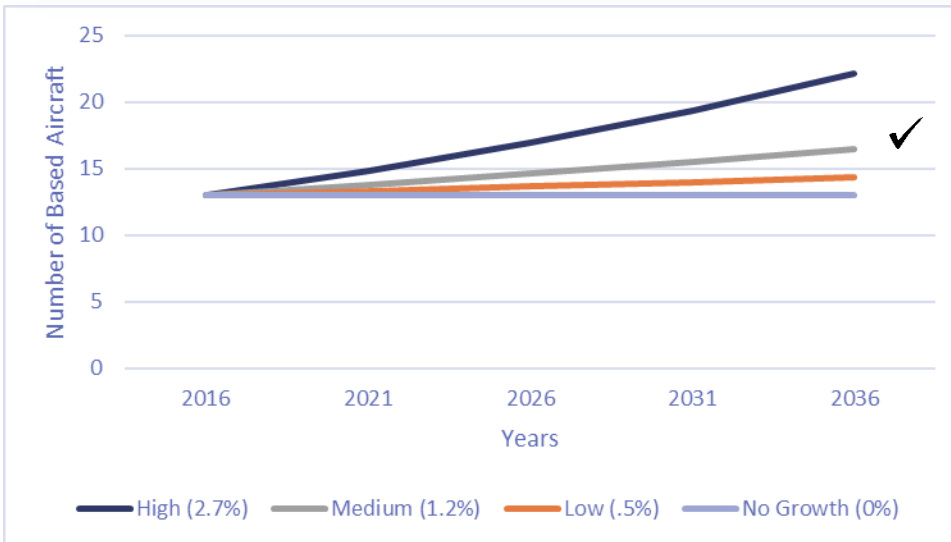
| Category              | Elements                                                                                                                                                    |
|-----------------------|-------------------------------------------------------------------------------------------------------------------------------------------------------------|
| Airfield Facilities   | Runway, taxiways, lighting                                                                                                                                  |
| Landside Facilities   | Terminal building, aprons, tiedowns, cargo/other operations, airfield maintenance equipment, fuel farm, access roadways, auto parking, and other facilities |
| Airspace System       | Air traffic service area, communications, airspace, navigational aids, airspace surfaces                                                                    |
| Airport Setting       | Socioeconomic, land use, future development initiatives, area geopolitical topics                                                                           |
| Environmental Setting | Air quality, noise, biological resources, cultural resources, etc.                                                                                          |
| Other Data            | Operational data, financial data, aerial survey/AGIS                                                                                                        |



# Based Aircraft Forecast

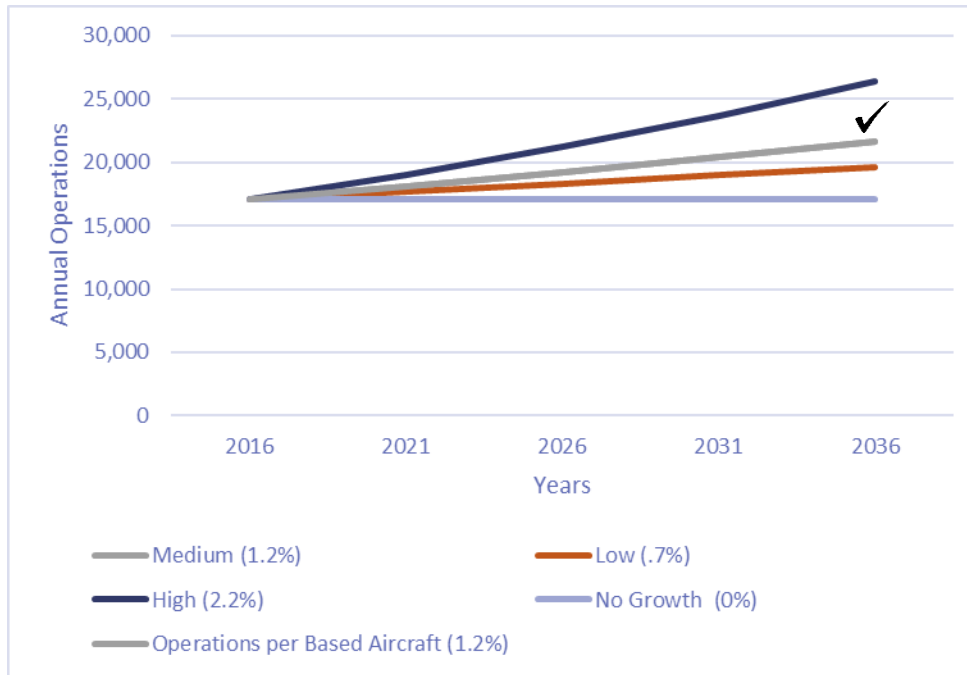
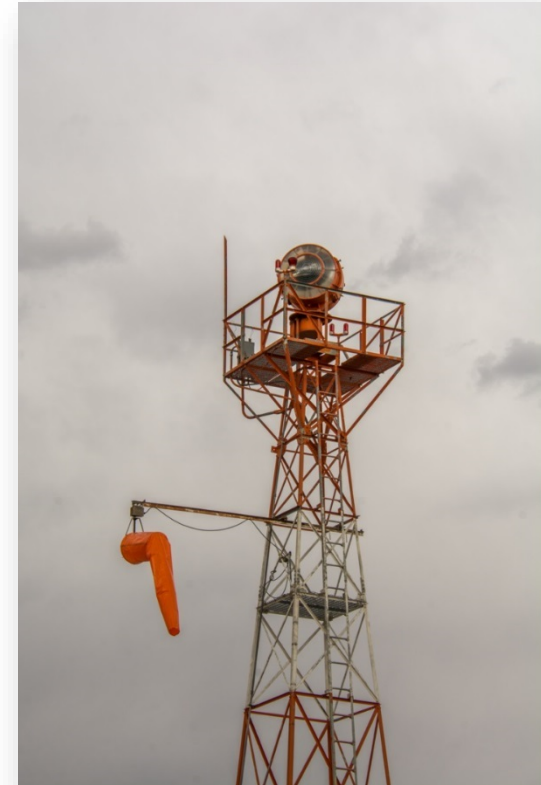


| Year               | High Growth | Medium Growth | Low Growth | No Growth |
|--------------------|-------------|---------------|------------|-----------|
| 2015               | 13          | 13            | 13         | 13        |
| <b>Projections</b> |             |               |            |           |
| 2021               | 15          | 14            | 13         | 13        |
| 2026               | 17          | 15            | 14         | 13        |
| 2031               | 19          | 16            | 14         | 13        |
| 2036               | 22          | 17            | 14         | 13        |
| <b>AAGR</b>        | <b>2.7%</b> | <b>1.2%</b> ✓ | <b>.5%</b> | <b>0%</b> |



# Aircraft Operations Forecast

| Year               | High Growth | Medium Growth | Low Growth | No Growth | Operations per Based Aircraft |
|--------------------|-------------|---------------|------------|-----------|-------------------------------|
| 2015               | 17,080      | 17,080        | 17,080     | 17,080    | 1,313 (ratio)                 |
| <b>Projections</b> |             |               |            |           |                               |
| 2021               | 19,043      | 18,130        | 17,686     | 17,080    | 18,130                        |
| 2026               | 21,232      | 19,244        | 18,314     | 17,080    | 19,244                        |
| 2031               | 23,673      | 20,427        | 18,964     | 17,080    | 20,427                        |
| 2036               | 26,394      | 21,682        | 19,637     | 17,080    | 21,682                        |
| <b>AAGR</b>        | <b>2.2%</b> | <b>1.2%</b> ✓ | <b>.7%</b> | <b>0%</b> | <b>1.2%</b>                   |





# Airport Reference Code

|                                                                                                                            |                                                                                                                            |
|----------------------------------------------------------------------------------------------------------------------------|----------------------------------------------------------------------------------------------------------------------------|
| <b>A-I</b><br><br>Cessna 150              | <b>A-II</b><br><br>Pilatus PC-12          |
| <b>B-I</b><br><br>Beech Baron 58          | <b>B-II<br/>AKO</b><br><br>Citation Excel |
| <b>B-III</b><br><br>ATR 72                | <b>C-I</b><br><br>Lear 60                 |
| <b>C-II</b><br><br>CL 604 Challenger      | <b>C-III</b><br><br>Airbus 319            |
| <b>D-II</b><br><br>Gulfstream IV (G450) | <b>D-IV</b><br><br>Boeing 757           |

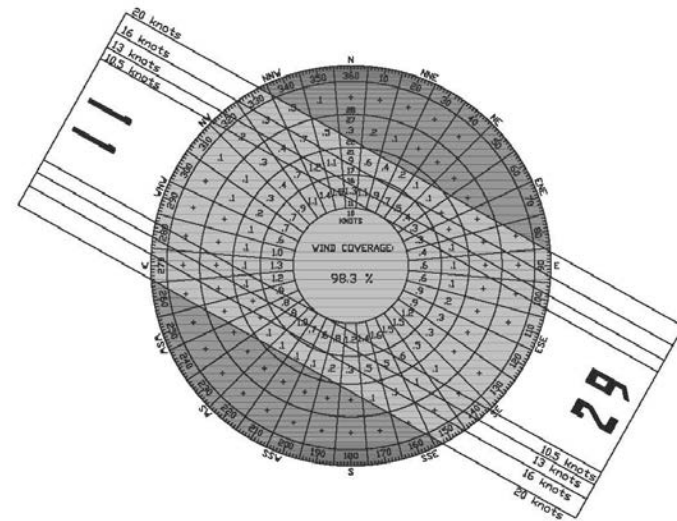
- Based on:
  - Aircraft with at least 500 operations per year
  - Aircraft's approach speed and wing span/tail height
- Citation Excel: B-II
- Various ARC's have different runway design standards
- AKO is designed for C-III aircraft
  - Previously had commercial airline opportunities
  - Retain C-III as an Ultimate to preserve opportunities

# Runway Orientation - Wind Analysis

- Wind Coverage - percentage of time crosswind components are below an acceptable velocity (B-II: 13 knots)
- FAA AC 150/5300-13A states “desirable wind coverage for an airport is 95%”

## Current Runway Wind Coverage

|        | 10.5 knots | 13 knots | 16 knots | 20 knots |
|--------|------------|----------|----------|----------|
| All WX | 76.83%     | 86.05%   | 94.23%   | 98.3%    |
| IFR    | 73.48%     | 81.88%   | 90.52%   | 96.87%   |
| VFR    | 79.41%     | 88.23%   | 95.71%   | 98.83%   |



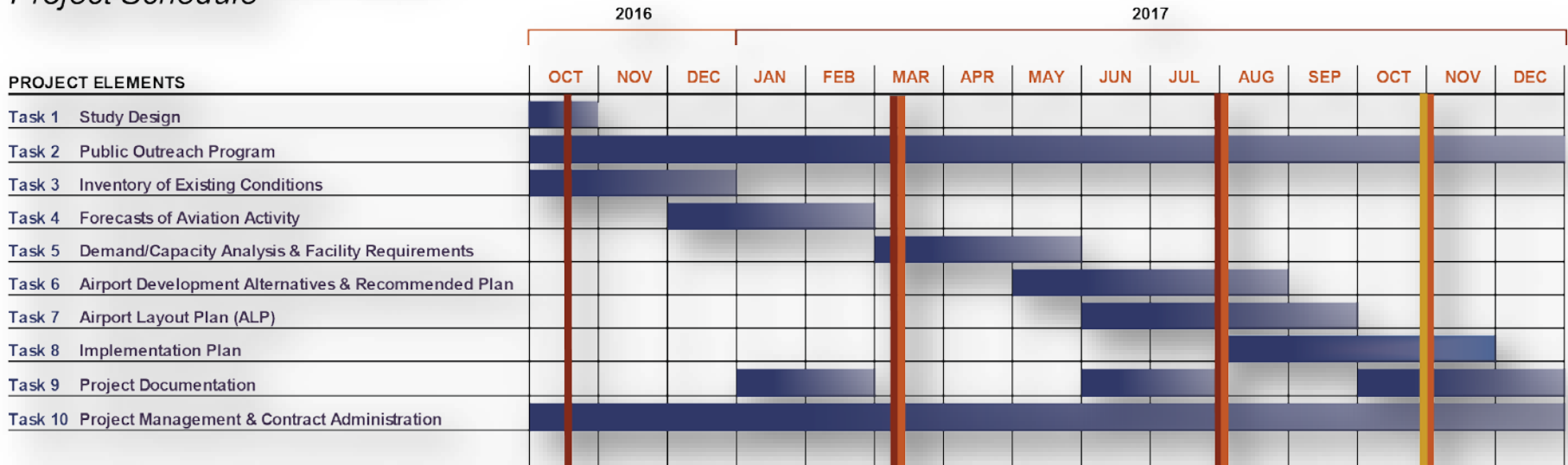
## Ultimate Runway Wind Coverage

|        | 10.5 knots | 13 knots | 16 knots | 20 knots |
|--------|------------|----------|----------|----------|
| All WX | 95.12%     | 98.49%   | 99.53%   | 99.9%    |
| IFR    | 94.31%     | 97.73%   | 99.16%   | 99.79%   |
| VFR    | 95.66%     | 98.81%   | 99.67%   | 99.93%   |

# Next Steps

## COLORADO PLAINS REGIONAL AIRPORT *Airport Master Plan*

### Project Schedule



MEETINGS: Project Advisory Meetings (3)  
Town Council Briefings (3)  
Community Information Meeting (1)

### *Work in Progress...*

- Facility Requirements
- Alternatives Development
- Financial Plan
- Next meeting – August/September 2017

# Master Plan Website



- Home
- News
- Master Plan Documents
- Reference Documents
- Schedule
- Meetings
- Helpful Links
- FAQs
- Comments
- Contact Us

1201 North Cedar  
Akron, CO 80720  
970.345.2397

[Fly AKO](#)



<http://sites.jviation.com/ako/MP/index.html>

## Welcome

Welcome to the official Colorado Plains Regional Airport (AKO) Master Plan project information web portal. AKO is updating its Airport Master Plan, which will study the facility needs to meet projected aeronautical demand for the next 20 years and recommend a plan that prepares the airport to serve as the preferred gateway and economic catalyst for the region. Your participation is important to us!

The master plan process is a collaborative effort involving the Colorado Plains Regional Airport staff, Town of Akron, Washington County, CDOT Division of Aeronautics, Federal Aviation Administration, other state and federal government organizations, and of course the users of the airport and community at large. This planning effort is necessary to ensure that the Airport has a solid plan to grow to meet the vision and aeronautical needs of the entire region.

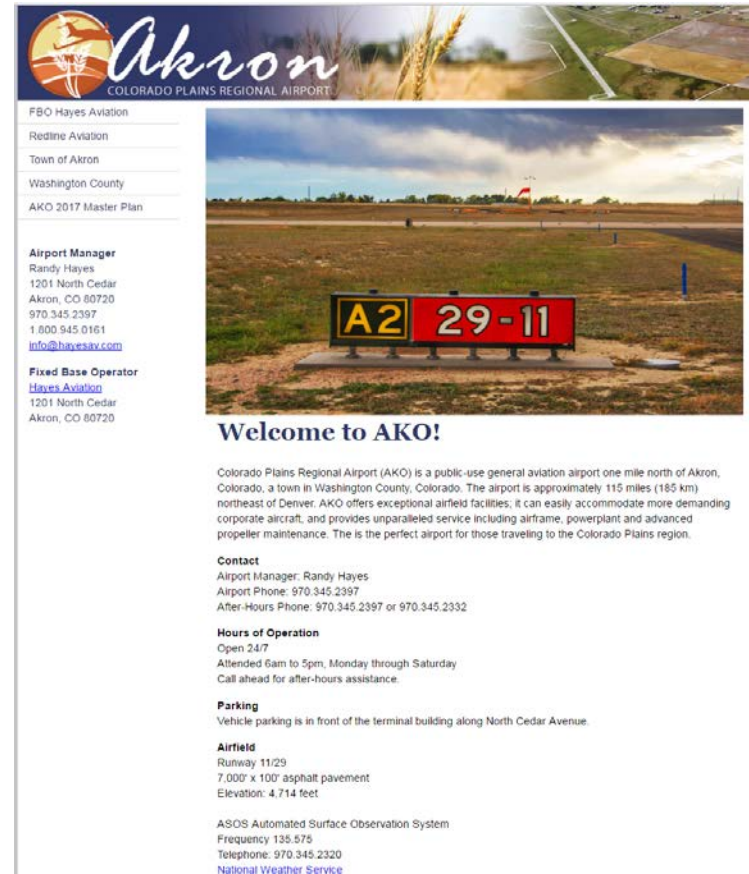
This website has been prepared as just one element of an extensive community outreach program so that airport users and the public can find useful information and have a forum to submit comments or suggestions regarding the future of AKO. By following the links, you will have access to study reports, airport layout plans, project schedule, and important news and meeting dates. We welcome your comments on the [Comments](#) page.

We look forward to an engaging dialog with you throughout the planning process!

**JVIATION**<sup>®</sup>

# New Airport Website

<http://sites.jviation.com/ako/new/index.html>




**AKRON**  
COLORADO PLAINS REGIONAL AIRPORT

FBO Hayes Aviation  
Redline Aviation  
Town of Akron  
Washington County  
AKO 2017 Master Plan

**Airport Manager**  
Randy Hayes  
1201 North Cedar  
Akron, CO 80720  
970.345.2397  
1.800.945.0161  
[info@hayesay.com](mailto:info@hayesay.com)

**Fixed Base Operator**  
[Hayes Aviation](#)  
1201 North Cedar  
Akron, CO 80720



**Welcome to AKO!**

Colorado Plains Regional Airport (AKO) is a public-use general aviation airport one mile north of Akron, Colorado, a town in Washington County, Colorado. The airport is approximately 115 miles (185 km) northeast of Denver. AKO offers exceptional airfield facilities; it can easily accommodate more demanding corporate aircraft, and provides unparalleled service including airframe, powerplant and advanced propeller maintenance. This is the perfect airport for those traveling to the Colorado Plains region.

**Contact**  
Airport Manager: Randy Hayes  
Airport Phone: 970.345.2397  
After-Hours Phone: 970.345.2397 or 970.345.2332

**Hours of Operation**  
Open 24/7  
Attended 6am to 5pm, Monday through Saturday  
Call ahead for after-hours assistance.

**Parking**  
Vehicle parking is in front of the terminal building along North Cedar Avenue.

**Airfield**  
Runway 11/29  
7,000' x 100' asphalt pavement  
Elevation: 4,714 feet

ASOS Automated Surface Observation System  
Frequency 135.575  
Telephone: 970.345.2320  
[National Weather Service](#)

**JVIATION**<sup>®</sup>