

Current System Performance Evaluation



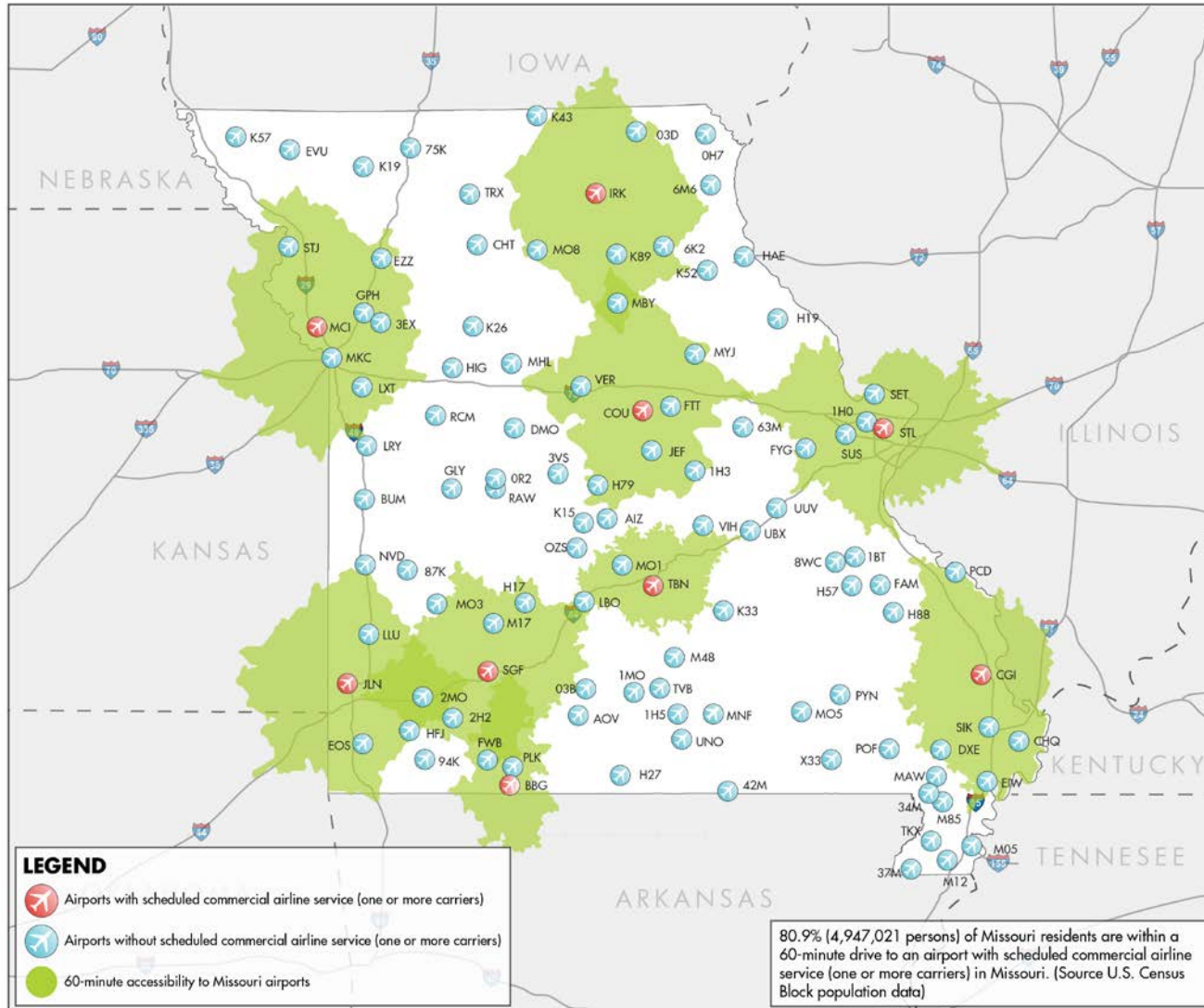


System Performance Measures Identify System Adequacies and Deficiencies

- 60 minute accessibility to an airport with scheduled commercial airline service (one or more carriers)
- 90 minute accessibility to an airport with scheduled commercial airline service (more than one carrier)
- 30 minute accessibility to an airport with any published approach
- 30 minute accessibility to an airport with an approach with vertical guidance (precision approach/LPV)
- 30 minute accessibility to an airport with AWOS (or other on-site weather reporting equipment)
- 30 and 45 minute accessibility to an airport meeting selected NBAA Business Airport characteristics

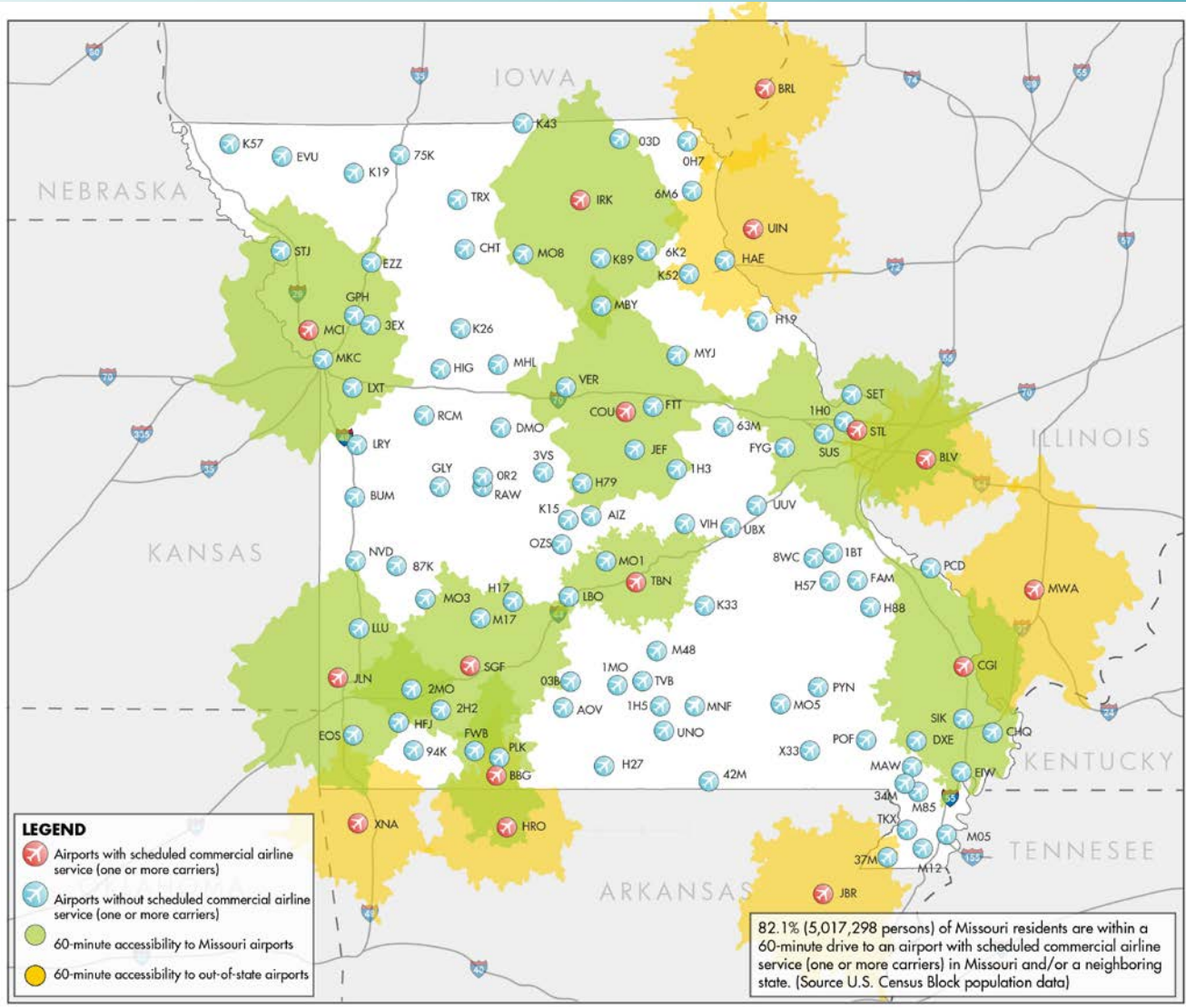


60 Minute Accessibility to Missouri Commercial Airports – 79.9% of Residents



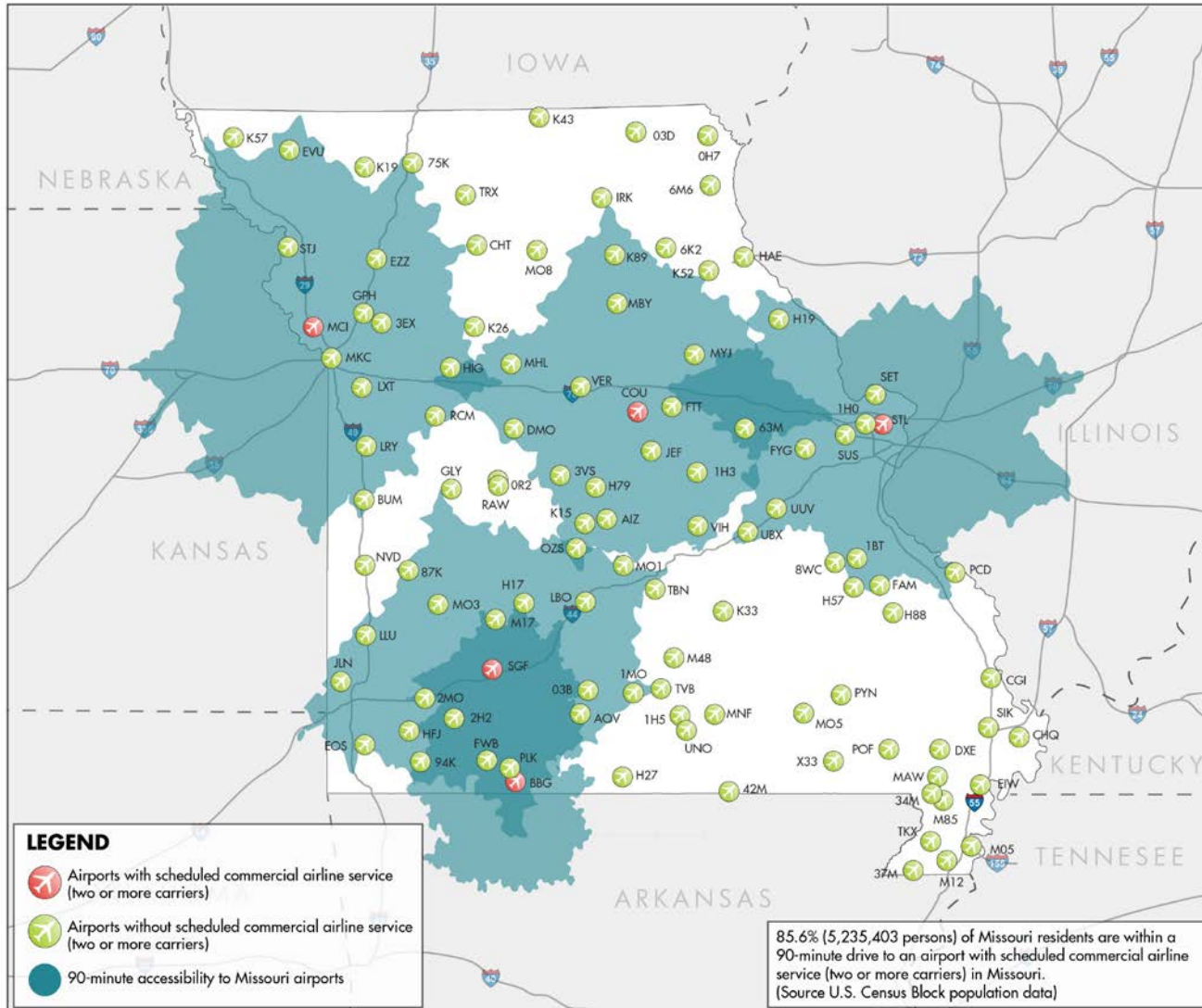


60 Minute Accessibility to Missouri and Nearby Commercial Airports – 82.1% of Residents



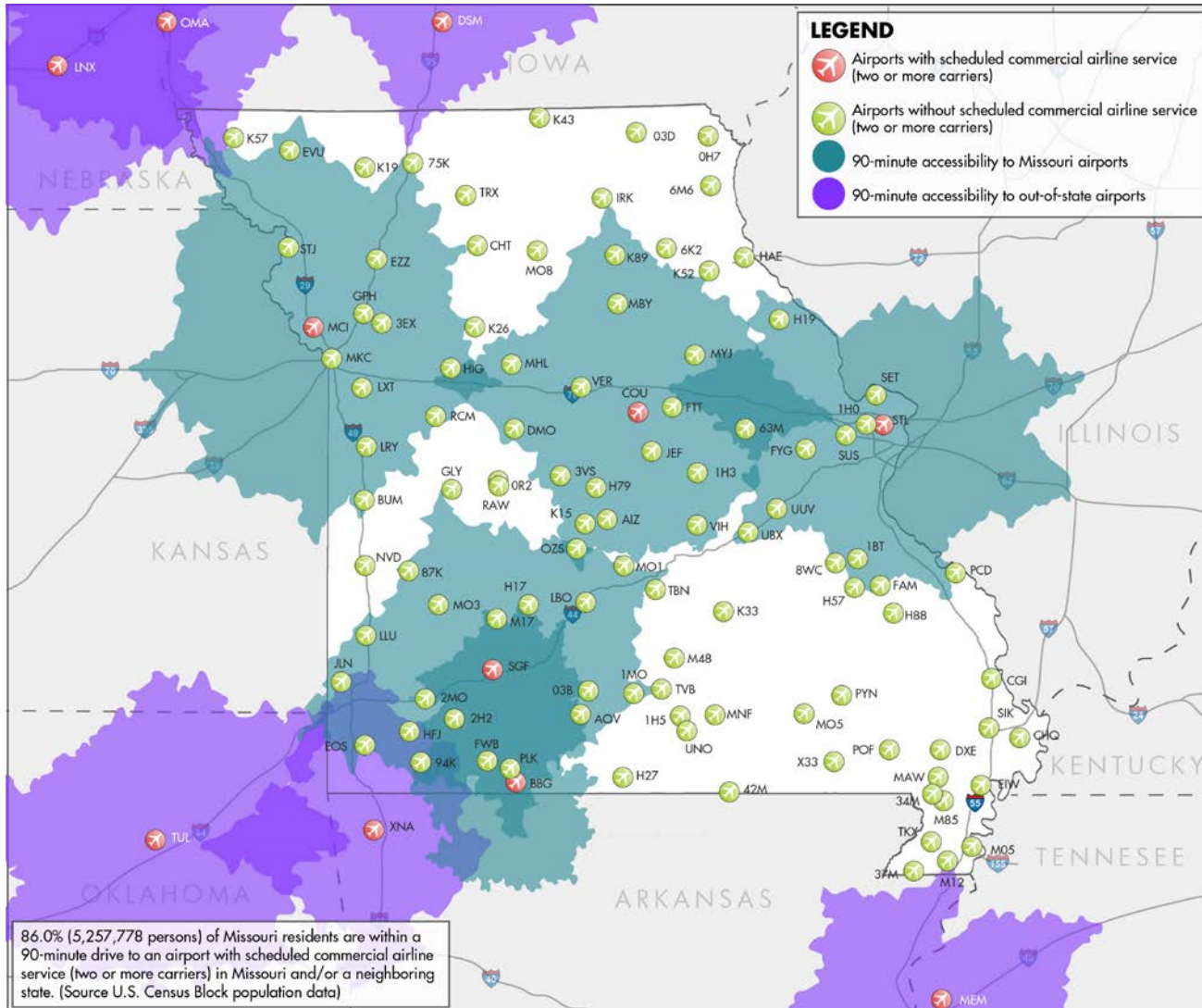


90 Minute Accessibility to Missouri Airports/More than One Carrier – 85.6% of Residents





90 Minute Accessibility to Missouri and Nearby Airports/More than One Carrier – 86% of Residents



Conclusions from Commercial Airport Accessibility Analysis

Accessibility is not significantly different when 60 and 90 minute service areas are considered

Out-of-state commercial airports do not add notably to commercial airport accessibility

Additional commercial airports in Missouri are not likely

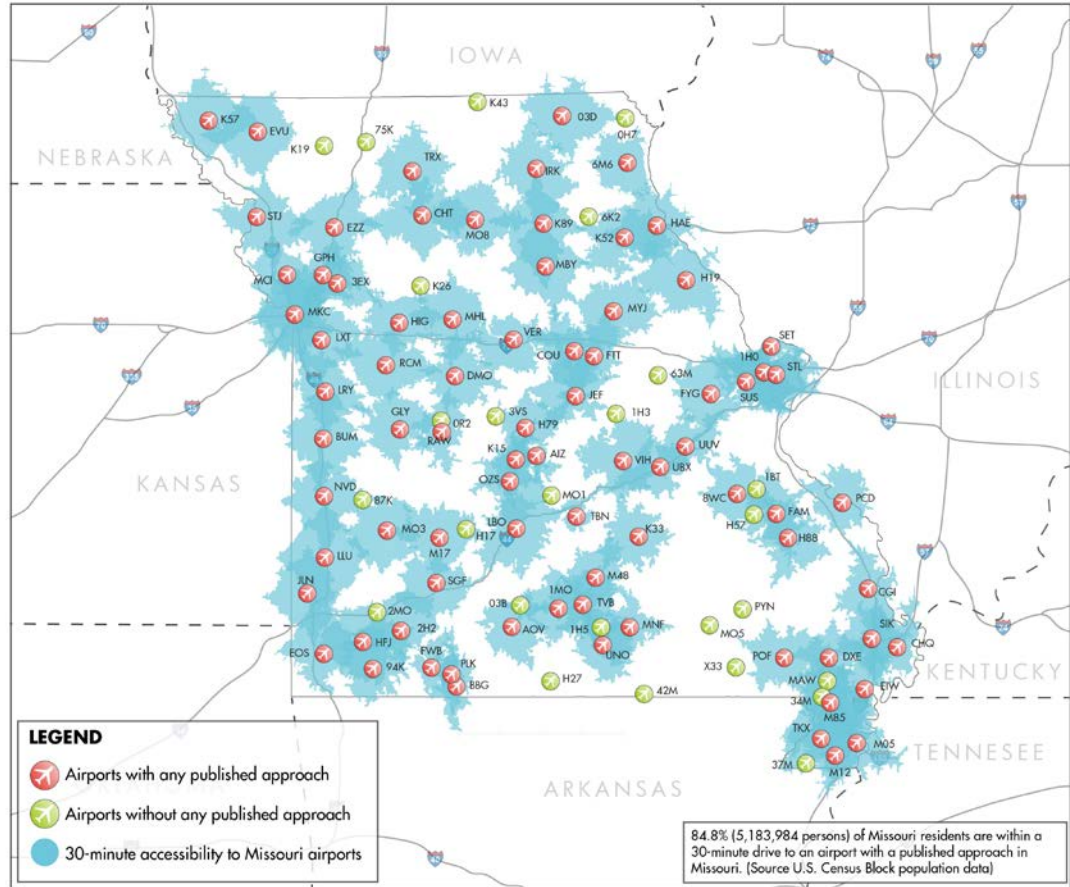
Some parts of Missouri will most likely continue to be beyond a 60 or 90-minute service area for a commercial airport

Airports served by a single carrier may face challenges with pilot shortages, lack of small commercial planes, and carrier desires to curtail operating costs



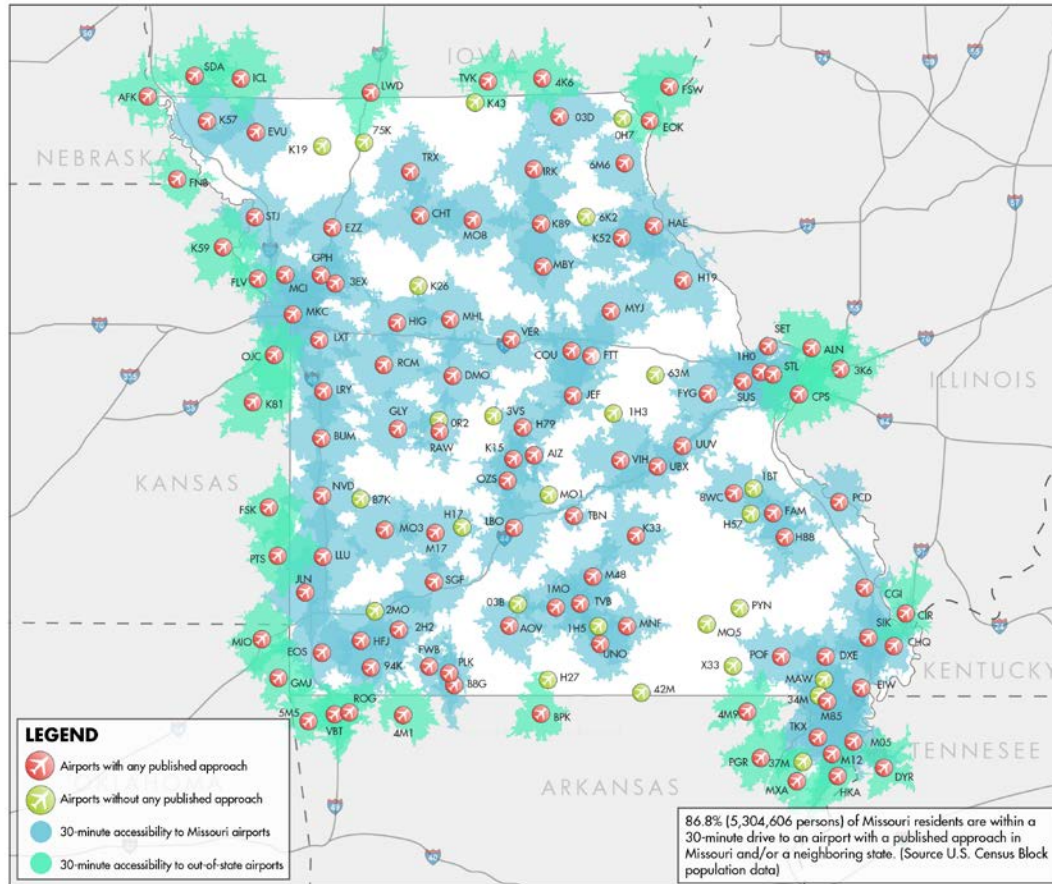
Accessibility to a Missouri Airport with a Published Approach

- **76%** of all study airports have a published approach
- Almost **85%** of all residents are within 30 minutes or less of one or more airports with a published approach





Accessibility to a Missouri or Nearby Airport with a Published Approach



When Missouri and nearby airports are considered, 30 minute accessibility increases from **85%** to almost **87%**

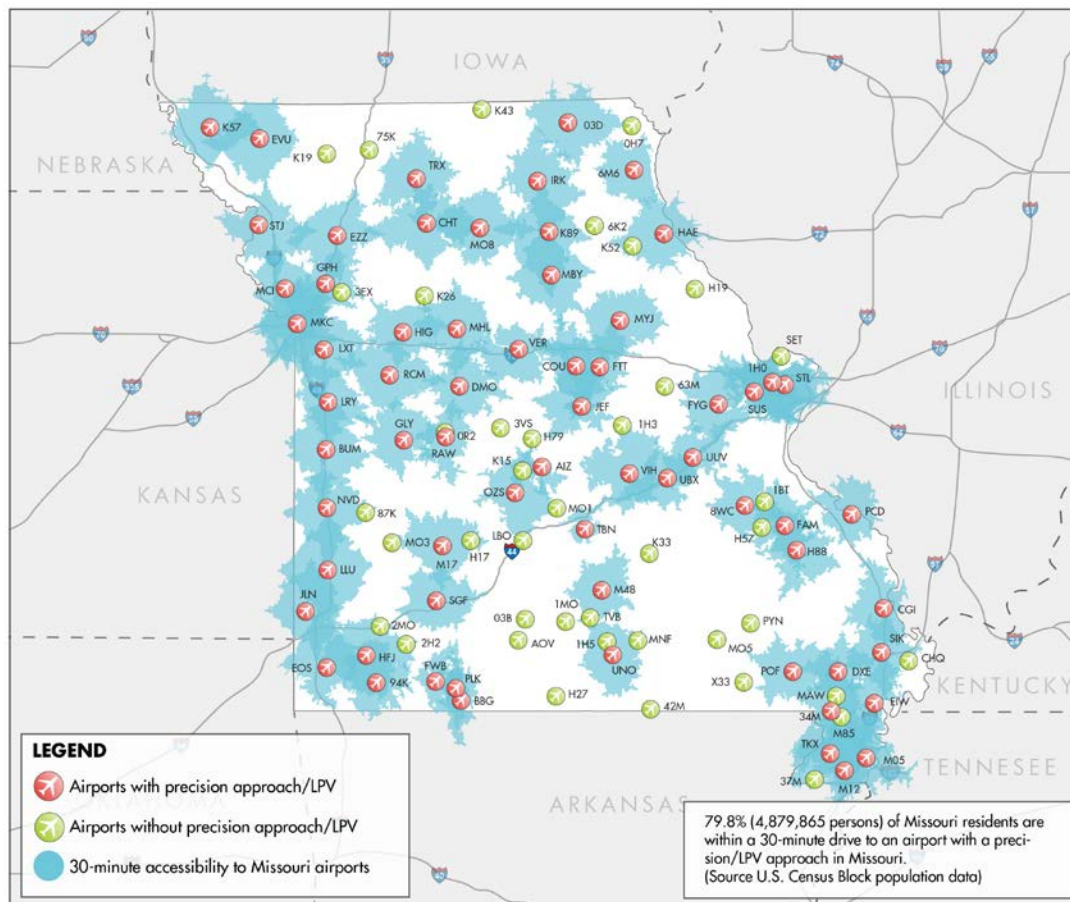
System plan facility objectives call for all Commercial, Regional, and Business airports to have a published approach

The recommended plan will determine if accessibility for this measure will increase in the future



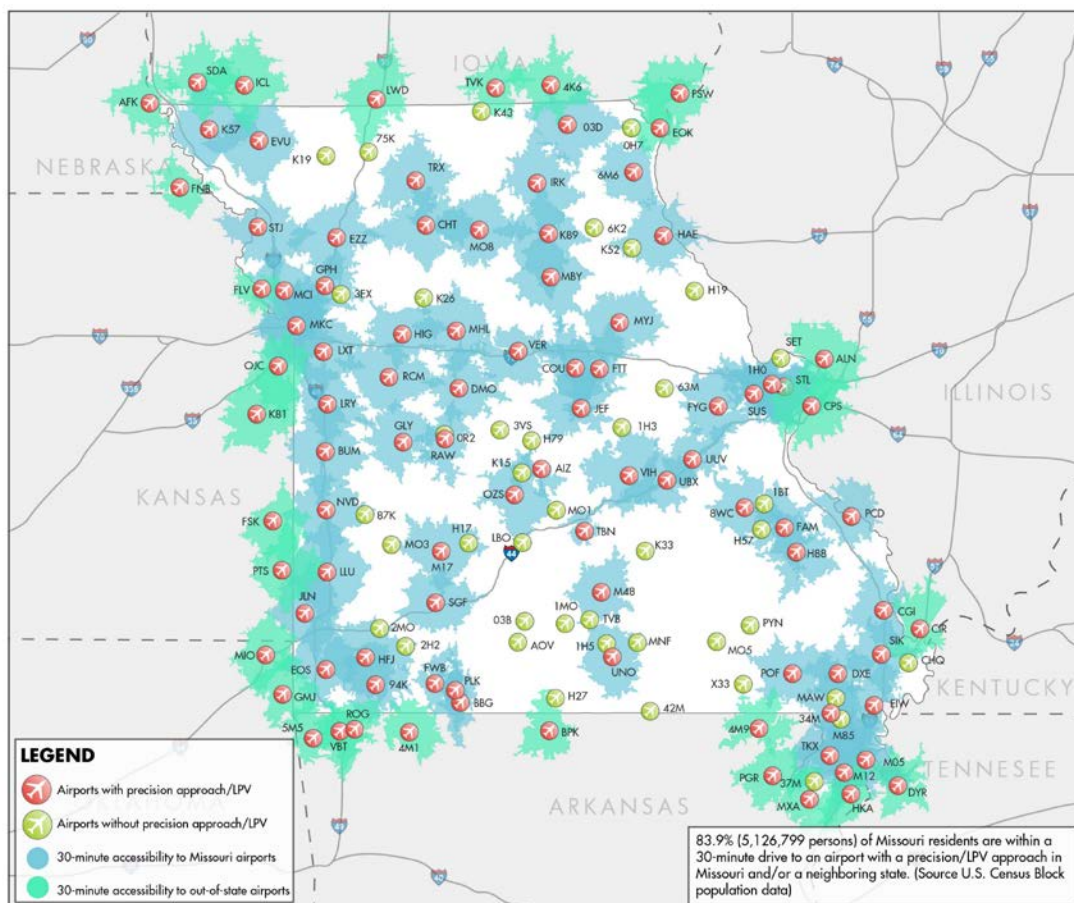
Accessibility to Missouri Airports with a Precision-Like Approach (Vertical Guidance = ILS or LPV)

- **61%** of all study airports have an ILS or LPV
- Almost **80%** of all Missouri residents are within 30 minutes or less of an airport with a precision-like approach





Accessibility to Missouri and Nearby Airports with a Precision-Like Approach (Vertical Guidance ILS or LPV)

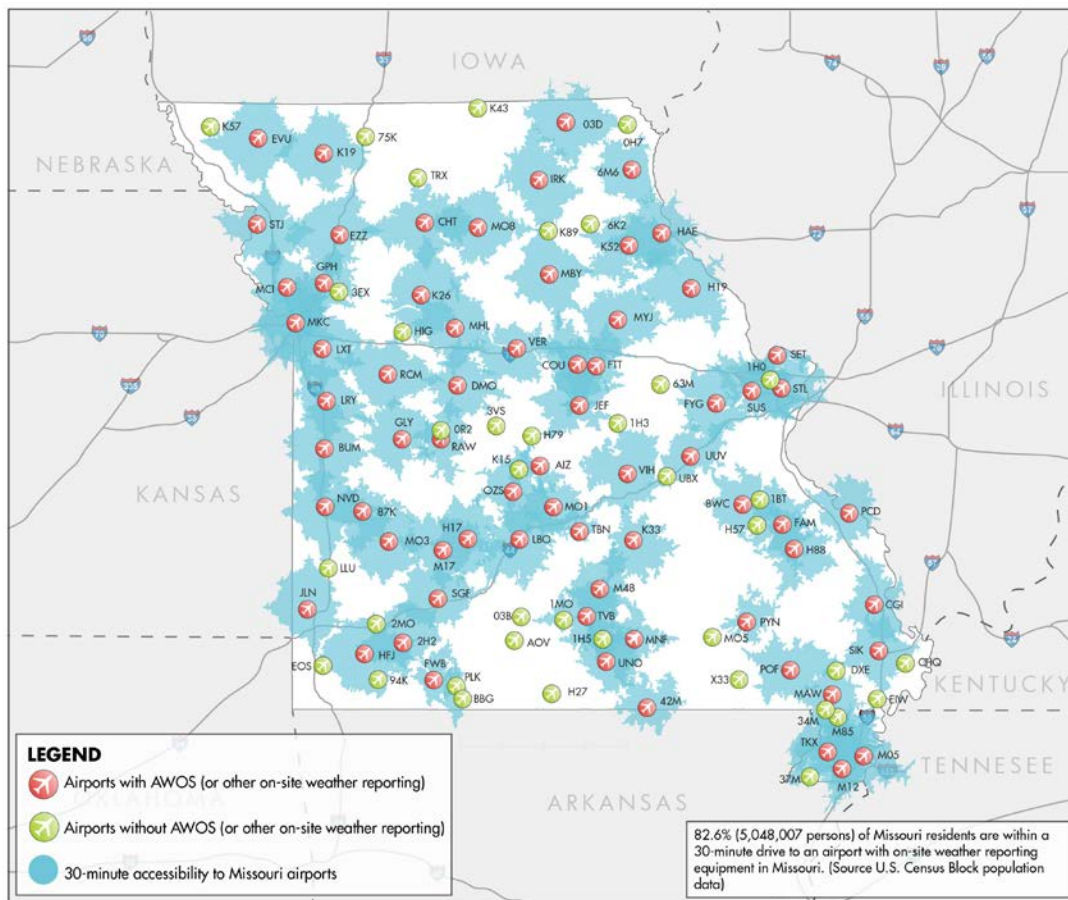


- Almost **87%** of all Missouri residents are within 30 minutes or less of an airport with a precision-like approach when Missouri and neighboring airports are considered
- All Commercial and Regional airports should have a precision like approach (ILS or LPV)
- The recommended plan will determine if additional airports in Missouri should be equipped with this capability



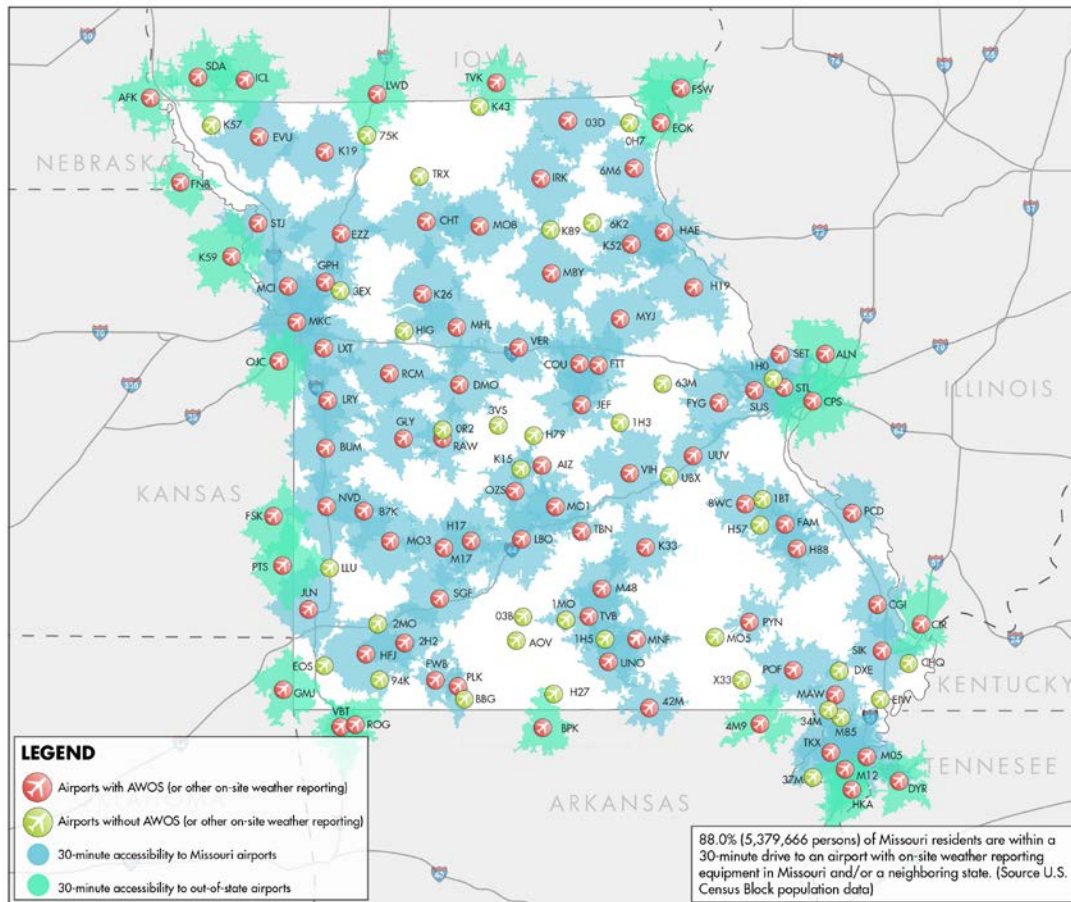
Accessibility to Missouri Airports with On-Site Weather Reporting Equipment (AWOS or ASOS)

- **65%** of all study airports have on-site weather reporting equipment
- Almost **83%** of all Missouri residents are within 30 minutes or less of a Missouri airport with on-site weather reporting equipment






Accessibility to Missouri and Nearby Airports with On-Site Weather Reporting Equipment



- Almost **88%** of all Missouri residents are within 30 minutes or less of an airport (Missouri or neighboring state) with on-site weather reporting equipment
- All Commercial and Regional airports should have on-site weather reporting equipment
- The recommended plan will determine if additional airports in Missouri should be equipped with this capability



Accessibility to Airports Exhibiting Business Airport Characteristics

- Business airport characteristics from the National Business Aviation Association (NBAA) were considered for this measure
- NBAA business airport characteristics were established by NBAA members
- Business aviation is the fastest growing segment of general aviation
- NBAA characteristics considered those most often needed to serve medium business jets and light business jets

NBAA business characteristics not meant to supplant ASSET categories/AIP eligibility



NBAA Characteristics Used in this Analysis

NBAA Medium Business Jet Airports:

Up To 50,000 lbs

- Runway 5,000 feet by 100 feet
- Approach supported by vertical guidance
- Visual Glideslope Indicator (VGSI)
- Medium Intensity Runway Lighting (MIRL)
- On-site weather reporting equipment
- FBO services/aircraft maintenance
- Jet fuel

NBAA Light Business Jet Airports:

Up To 25,000 lbs

- Runway 4,000 feet by 75 feet
- Approach supported by vertical guidance
- Visual Glideslope Indicator (VGSI) – at least one runway end
- Medium Intensity Runway Lighting (MIRL)
- On-site weather reporting equipment
- FBO services/aircraft maintenance
- Jet fuel

Airports Currently Meeting NBAA Business Airport Characteristics

1

16% of all Missouri airports currently have all NBAA characteristics to serve medium business jets

2

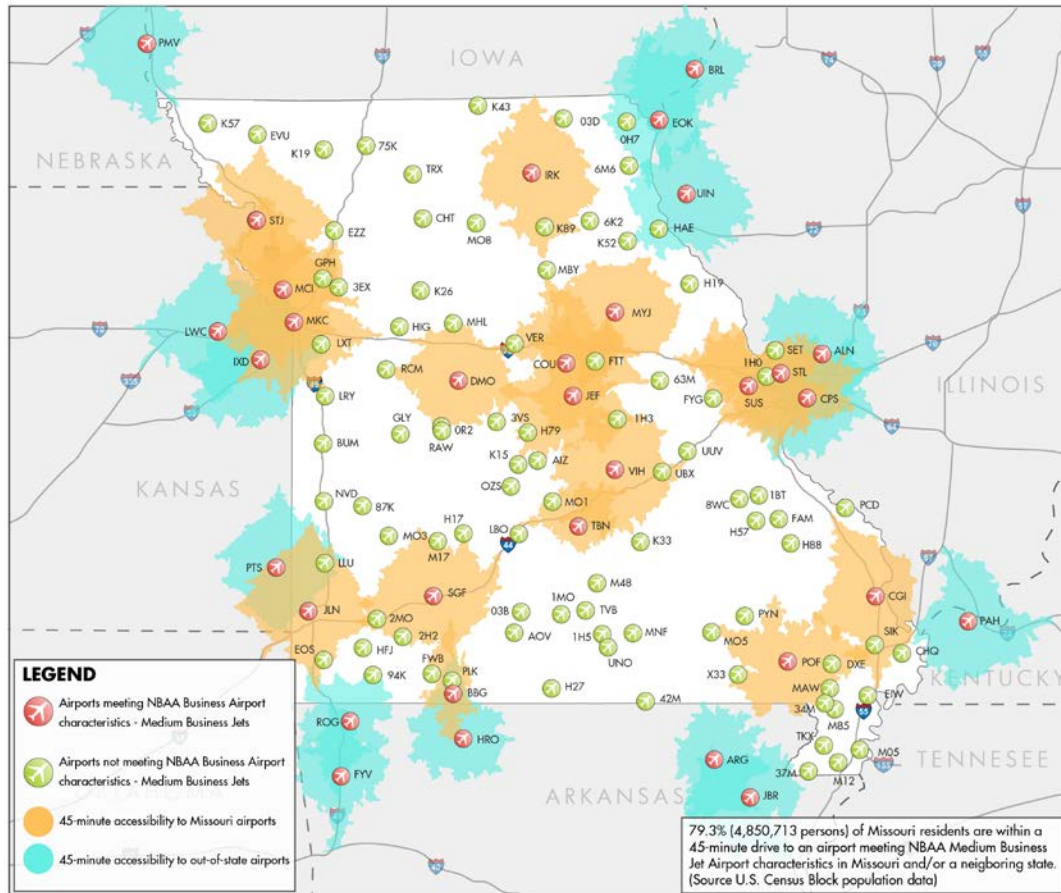
29% of all Missouri airports currently have all NBAA characteristics to serve light business jets

3

For this performance measure, medium business jet business airports were assigned a 45-minute service area and light business jet airports a 30 minute service area



Current Accessibility Missouri and Nearby Airports – NBAA Business Airports/Medium Jets

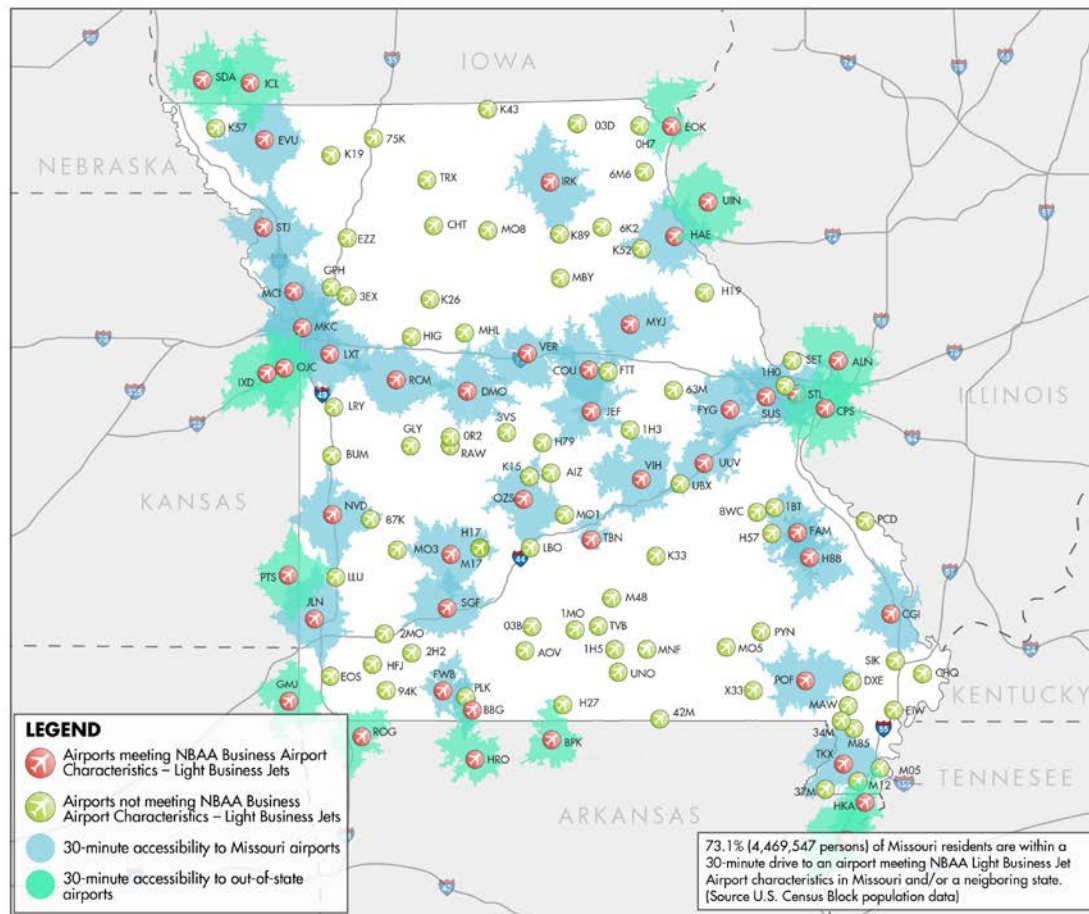


- Current 45 minute accessibility for only Missouri airports is **78%** of all residents
- Current 45 minute accessibility for Missouri and nearby airports increases slightly to **79%** of all residents



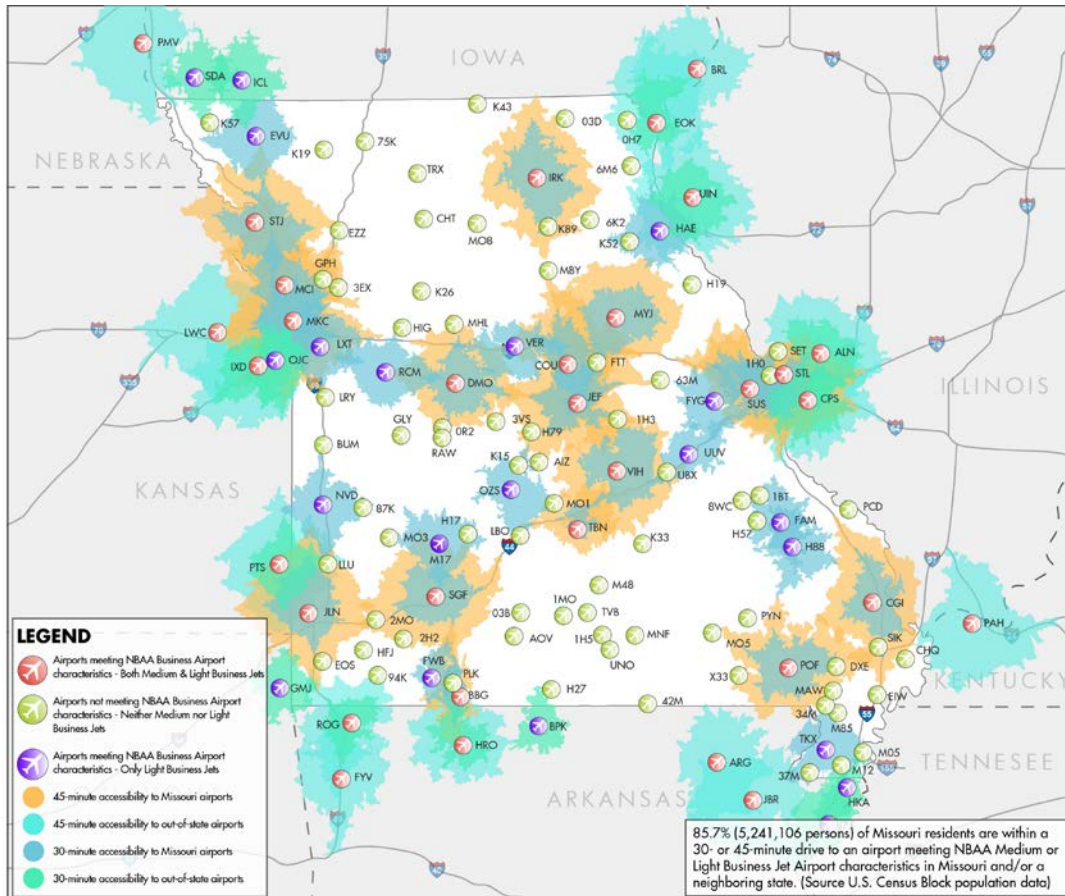
Current Accessibility Missouri and Nearby Airports – NBAA Business Airports/Light Jets

- Current 30 minute accessibility for only Missouri airports is **71%** of all residents
- Current 30 minute accessibility for Missouri and nearby airports increases slightly to **73%** of all residents





Current Combined Accessibility Missouri and Nearby Airports – NBAA Business Airports/Light and Medium Jets

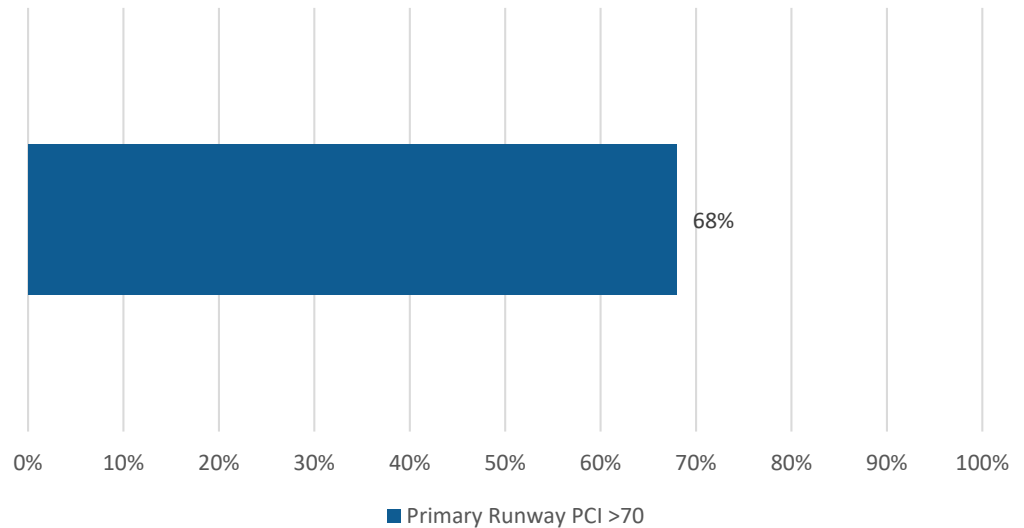


- Current combined accessibility to business airports, Missouri only, is **85%** of all residents
- Current combined accessibility to business airports, Missouri and nearby, **86%** of all residents
- Final airport role and study recommendations will determine if additional study airports should have facilities and services that meet NBAA business airport characteristics



System Performance Measure PCI on Primary Runway

- Missouri periodically updates its Statewide Pavement Management Study – Results from most current update are currently being analyzed
- Established goal for all primary paved runways to have a pavement condition index (PCI) of 70 or greater
- This rating signals pavement is in generally good condition
- Currently, **68%** of all paved primary runways at study airports have a PCI of 70 or greater
- Airports needing a project to increase their PCI to meet study objectives will be identified in the next task of the system plan





Summary of Current System Performance

CURRENT SYSTEM PERFORMANCE BY MEASURE

Performance Measure	Missouri residents in Service Area
30 Minute Current Accessibility to a Missouri Airport with a Published Approach	84.7%
30 Minute Current Accessibility to a Missouri or Nearby Airport with a Published Approach	86.7%
30-Minute Accessibility to an Airport with an Approach Supported by Vertical Guidance	
30 Minute Current Accessibility to a Missouri Airport with a Vertical Guidance Approach	79.7%
30 Minute Current Accessibility to a Missouri or Nearby Airport with an Approach Supported by Vertical Guidance	83.8%
30-Minute Accessibility to an Airport with On-Site Weather Reporting Equipment	
30 Minute Current Accessibility to a Missouri Airport with On-Site Weather Reporting Equipment	82.6%
30 Minute Current Accessibility to Missouri or Nearby Airport with On-Site Weather Reporting Equipment	88%
30-and 45-Minute Accessibility to Airports Exhibiting Selected NBAA Medium & Light Business Jet Airport Characteristics	
45 Minute Current Accessibility to Missouri Airports Meeting Acceptable NBAA Medium Business Jet Airport Characteristics	77.8%
45 Minute Current Accessibility to Missouri or Nearby Airports Meeting Acceptable NBAA Medium Business Jet Airport Characteristics	79.3%
30 Minute Current Accessibility to Missouri Airports Meeting Acceptable NBAA Light Business Jet Airport Characteristics	70.9%
30 Minute Current Accessibility to Missouri or Nearby Airports Meeting Acceptable NBAA Light Business Jet Airport Characteristics	73.1%
45 and 30 Minute Current Accessibility to Missouri Airports Meeting Acceptable NBAA Medium or Light Business Jet Airport Characteristics	84.6%
45 and 30 Minute Current Accessibility to Missouri or Nearby Airports Meeting Acceptable NBAA Medium or Light Business Jet Airport Characteristics	85.7%
System Performance for Pavement Condition Index (PCI)	
- Percentage of System Airports with a PCI of 70 or greater	68.0%



Summary of Current System Performance Cont...

CURRENT SYSTEM PERFORMANCE BY MEASURE

Performance Measure	Missouri residents in Service Area
60-Minute Accessibility to an Airport with Scheduled Commercial Airline Service (one or more carriers)	
60 Minute Current Accessibility to Missouri Commercial Airports (one or more carriers)	80.9%
60 Minute Current Accessibility to Missouri and Nearby Commercial Airports (one or more carriers)	82.1%
90-Minute Accessibility to an Airport with Scheduled Commercial Airline Service (more than one carrier)	
90 Minute Current Accessibility to Missouri Commercial Airports (more than one carrier)	85.6%
90 Minute Current Accessibility to Missouri and Nearby Commercial Airports (more than one carrier)	86.0%