



MEMORIAL
AIRPORT

APPENDIX J



Driggs-Reed Memorial Airport Master Plan

Agenda
Kick-off Meeting
October 10th, 2018 - 10:00 am

10:00 a.m. Airport Master Plan Kick-off Meeting

1. Welcome and Introductions
2. Airport Master Planning
 - a. Purpose
 - b. Process
3. Project Kick-off Checklist
 - a. Goals and Objectives
 - b. Key Issues
 - c. Schedule
 - d. Project Roles, Responsibilities and Communication
4. Comments and Questions
5. Next Steps

12:00 p.m. Adjourn

Project Contacts:

| | | |
|---------------------|--|----------------|
| Tony Davis | Tony.Davis@Jviation.com | (443) 307-3280 |
| Jeffery Hogan, P.E. | Jeffery.Hogan@Jviation.com | (801) 924-4227 |

City Building Conference Room
Driggs, ID

**DRIGGS-REED MEMORIAL AIRPORT
MASTER PLAN UPDATE
PLANNING ADVISORY COMMITTEE MEETING**

**FEBRUARY 11, 2019
3PM TO 4PM
CITY OF DRIGGS – COUNCIL CHAMBERS**

1. PROJECT INTRODUCTION – Tony Davis, Aviation, (Project Manager)
 - Introduction of Committee - Expectations
 - Brief Overview of Project Time Line

2. PROJECT STATUS
 - Inventory
 - Forecast
 - Tenant / User Survey
 - Crosswind / Runway discussion

3. UPCOMING ELEMENTS

**DRIGGS-REED MEMORIAL AIRPORT
MASTER PLAN UPDATE
PLANNING ADVISORY COMMITTEE MEETING**

**JULY 8, 2019 AT 4:30PM
CITY OF DRIGGS – COUNCIL CHAMBERS**

1. PROJECT UPDATE/STATUS – Tony Davis, Jviation, (Project Manager)
 - Master Planning Review
 - Overview of Completed Items
 - Inventory
 - Forecast

2. CURRENT PROJECT FOCUS – Group Discussion
 - Facility Requirements
 - Future Development Alternatives

3. UPCOMING ELEMENTS – Tony Davis
 - On-Going Tasks
 - Next Steps



MEMORIAL
AIRPORT

Airport Master Plan

Project Advisory Committee Meeting

July 8, 2019



JVIATION®

Today's Agenda

We will review:

- Master Planning Review
- Overview of Completed Items
- Current Project Focus
 - Facility Requirements
 - Development Alternatives
- Next Steps



How We Master Plan...



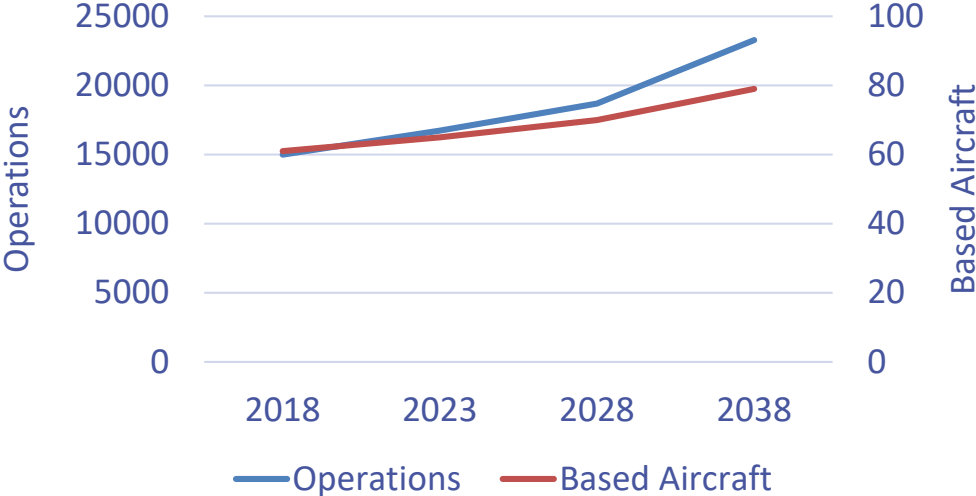
Inventory

| Category | Elements |
|-----------------------|---|
| Airfield Facilities | Runway, taxiways, lighting |
| Landside Facilities | Terminal building, aprons, tiedowns, cargo/other operations, airfield maintenance equipment, fuel farm, access roadways, auto parking, and other facilities |
| Airspace System | Air traffic service area, communications, airspace, navigational aids, airspace surfaces |
| Airport Setting | Socioeconomic, land use, future development initiatives, area geopolitical topics |
| Environmental Setting | Air quality, noise, biological resources, cultural resources, etc. |
| Other Data | Operational data, financial data, aerial survey/AGIS |



Forecast

Activity Forecast



| | |
|--|--|
| A-I  Cessna 150 | A-II  Pilatus PC-12 |
| B-I  Beech Baron 58 | B-II  Citation Excel |
| B-III  ATR 72 | C-I  Lear 60 |
| C-II  CL 604 Challenger | C-III  Airbus 319 |
| D-II  Gulfstream IV (G450) | D-IV  Boeing 757 |

Based Aircraft: An aircraft that spends the majority of its time at DIJ. Seasonal aircraft and TTF aircraft account for 30+ additional aircraft.

Facility Requirements

- Meeting based aircraft and operations demand
- Meeting FAA Design Standards
 - Based on ARC and approach minimums
 - Runway safety area, object free area, protection zones, etc.
 - Taxiway safety areas and object free area
- Tenant/User Surveys
- PAC Input
- Various Analyses

| Primary Runway Design Standards | Dimension |
|---------------------------------|-------------------------------|
| Runway Safety Area | 1,000' beyond rwy end x 400'* |
| Runway Object Free Area | 1,000' beyond rwy end x 800' |
| Approach Runway Protection Zone | 500' x 1,010' x 1,700 |
| Taxiway Safety Area | 79' |
| Taxiway Object Free Area | 131' |

We want your feedback! The Driggs-Reed Memorial Airport (DJJ) is in the process of updating the Airport's Master Plan. The Master Plan will guide the Airport through the next twenty years of development. Input is being solicited from based aircraft owners, tenants and users to determine adequacy of the facility.

Thank you for taking the time to complete this survey. Your input will help shape the future of DJJ. If you have questions regarding this survey or would like to discuss any issues regarding the airport facility, please contact Tony Davis, Project Manager at tony.davis@aviation.com or (443) 307-3280.

This form was completed by:
 First Name (optional): _____
 Last Name (optional): _____
 Email Address (optional): _____

May we contact you to follow up on your survey responses, if needed?
 Yes
 No

Do you own one or more aircraft?
 2. Aircraft #1
 Single Engine Piston
 Multi Engine Piston
 3. Aircraft #2
 Single Engine Piston
 Multi Engine Piston
 Turbo-prop
 Jet
 Helicopter
 Other
 4. Aircraft #3
 Single Engine Piston
 Multi Engine Piston
 Turbo-prop
 Jet
 Helicopter
 Other

and model of your aircraft? _____

frequency of your aircraft operations (takeoffs and landings) did you conduct at DJJ in 2017? _____ 2018? _____

frequency of your aircraft operations (takeoffs and landings) do you expect to conduct in 2019? _____ 2020? _____

indicate your current lease expiration date: _____

where are your aircraft based? _____

do you have your aircraft at DJJ? _____

Use your smart phone to scan the QR code to take this survey online

continued on next page

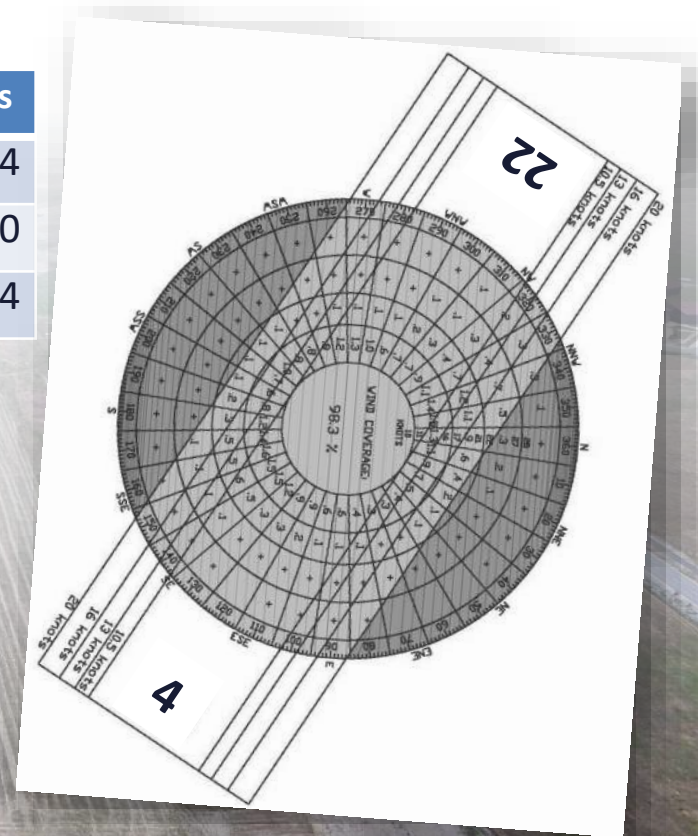
Runway Orientation - Wind Analysis

- Wind Coverage - percentage of time crosswind components are below an acceptable velocity (example: small single-engine = 10.5 knots)
- FAA AC 150/5300-13A states “desirable wind coverage for an airport is 95%”

Current Runway Wind Coverage

| | 10.5 knots | 13 knots | 16 knots | Observations |
|--------|------------|----------|----------|--------------|
| All WX | 94.16% | 97.48% | 95.57% | 106,304 |
| IFR | 92.48% | 96.67% | 99.33% | 24,750 |
| VFR | 94.60% | 97.71% | 99.57% | 79,964 |

Source: Data from the National Climate Center
Station: 720369 Driggs-Reed Memorial Airport Annual Period Record 2008, 2009, 2010, 2011, 2012, 2013, 2015, 2016, 2017

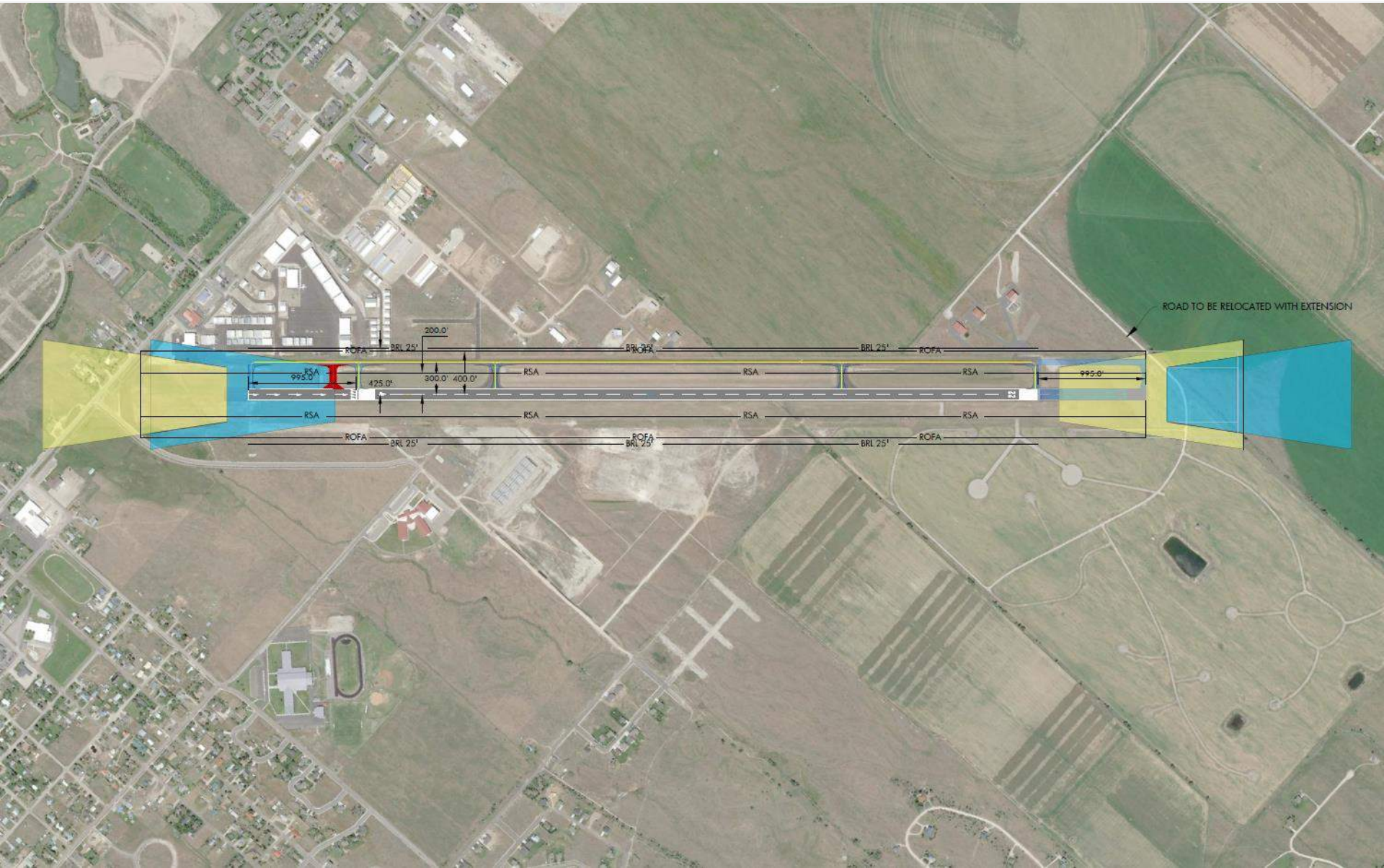


Facility Requirements

| Facility | Future Requirement | Justification |
|---------------------------------|---|---|
| Runway Development | Property Acquisition/Crosswind runway | FAA 95% coverage recommendation |
| Runway Protection | Runway RPZ/Threshold Relocation | Road within Runway 4 approach RPZ FAA Design Criteria – discussion item |
| Taxiway Improvements | Correct direct ramp to runway access, additional taxiways with development Install medium intensity lighting for Taxiway-A, C, D and E | FAA taxiway design criteria Taxiway visibility via edge lighting |
| Terminal Development | Modify or relocate FBO out of Runway OFA | FAA OFA criteria |
| Auto Parking and Roadway Access | Increase the number of parking spaces as additional facilities are developed | Provide a better level of service and convenience to based aircraft owners |
| Hangar Development | Increase the number of medium and large hangars | As demand warrants. Meet demand for the increasing number of based aircraft |
| Fuel Storage and Dispensing | Self-Serve 100LL pump | User requests and customer service |
| Pilot Lounge | Dedicated pilot lounge | User requests and customer service |
| Maintenance Equipment Storage | Acquire rotary snow-removal broom Expand SRE/maintenance storage | More effective snow removal |
| Gates, Security Systems | 7' Controlled access gates | Restrict access and protect aircraft and airfield assets |
| Perimeter Fencing | Install 7' wildlife fence around airport property | Security and wildlife management |

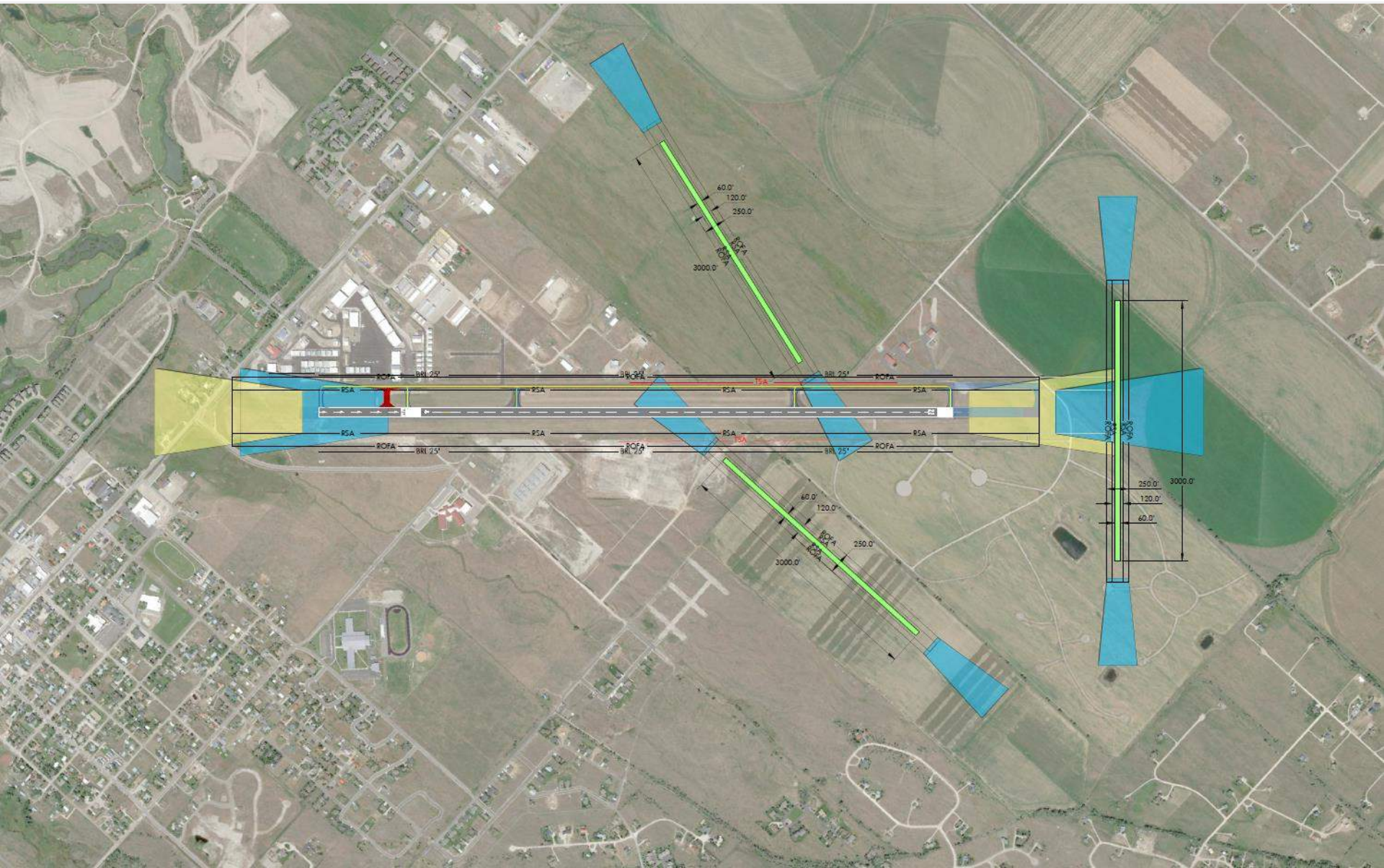
Preliminary Alternatives

Primary Runway



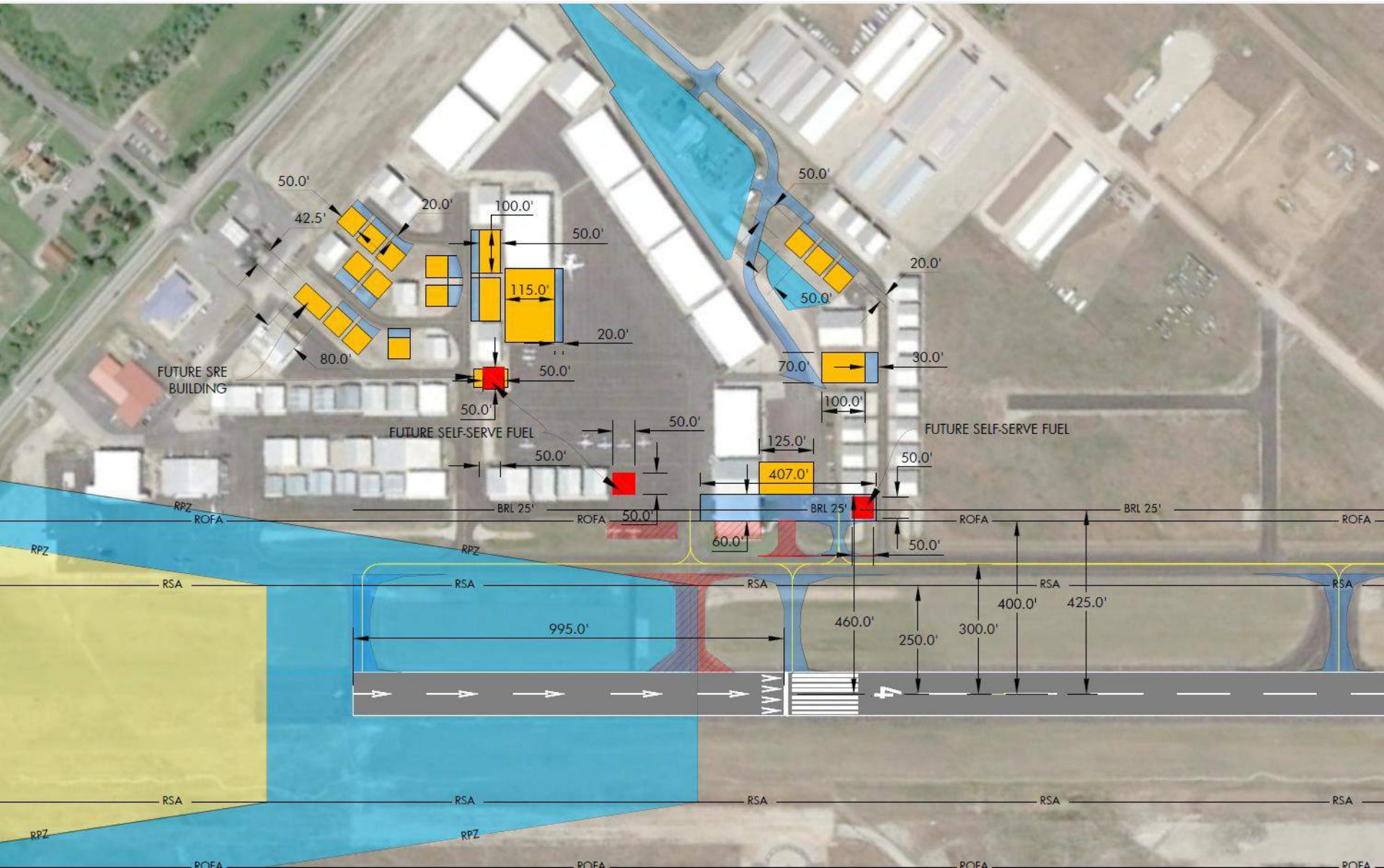
Preliminary Alternatives

Crosswind Runway



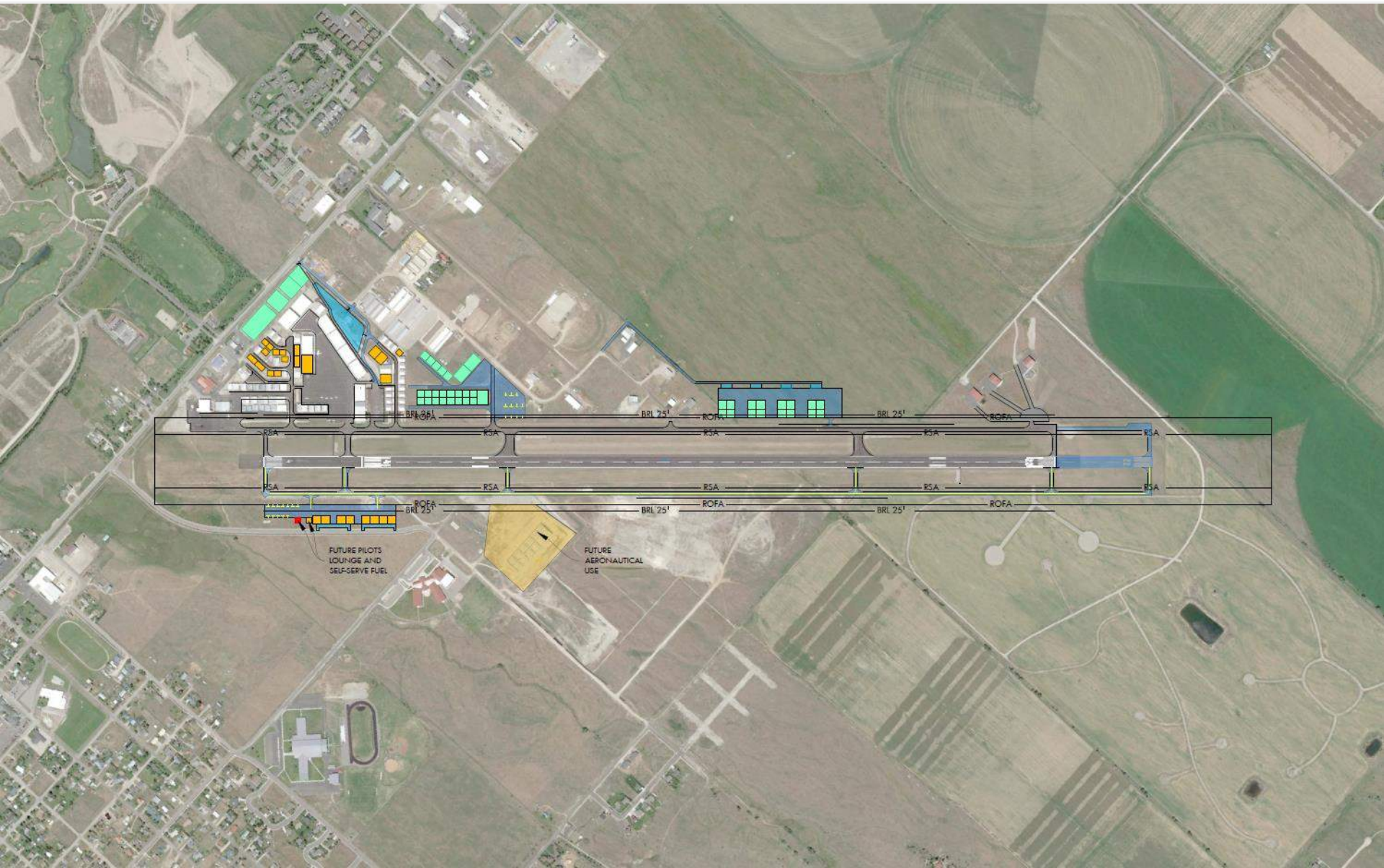
Preliminary Alternatives

Terminal Area



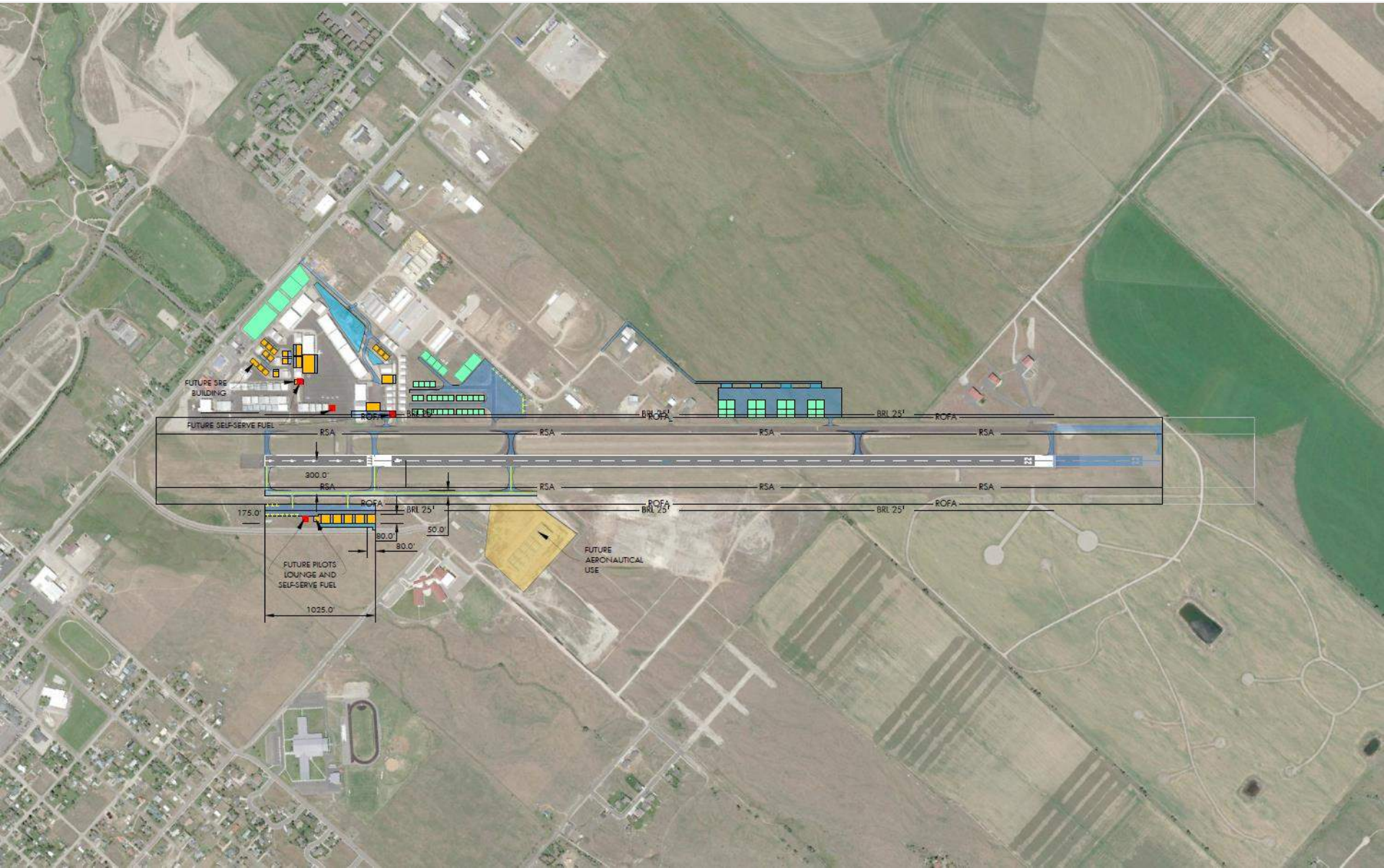
Preliminary Alternatives

Other Development Areas – Plan A



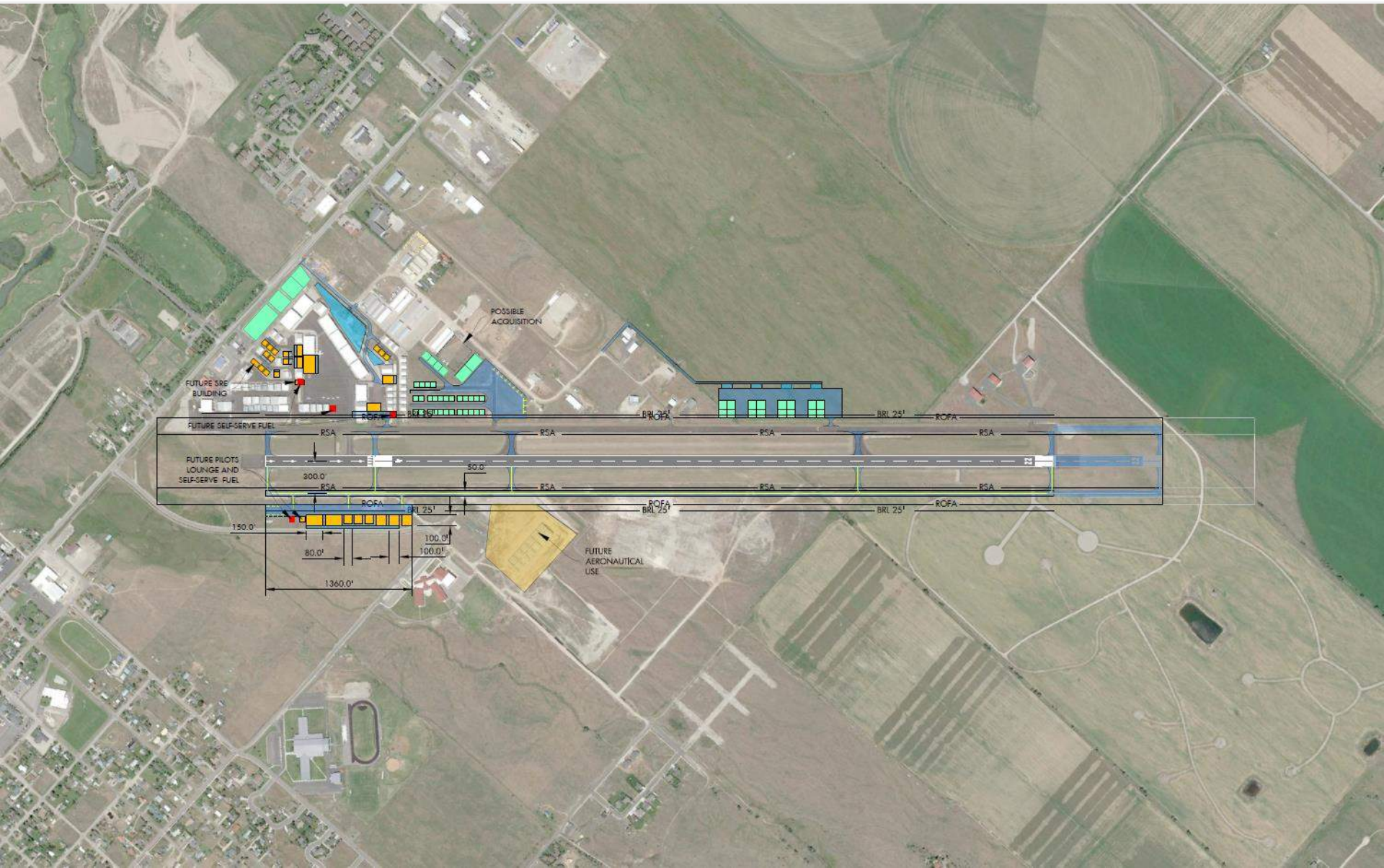
Preliminary Alternatives

Other Development Areas – Plan B



Preliminary Alternatives

Other Development Areas – Plan C



FBO Concept Renderings

Minimalist Concept...

- Removes only the portion of the FBO in the Runway OFA
- Expands FBO in parking lot to replace what was removed
- Maintains aircraft hangar and about half of existing FBO
- Potential for small corporate aircraft staging area



FBO Concept Renderings

FBO Replacement Concept...

- Removes all of the FBO and restaurant areas
- Replaces FBO and restaurant (multi-story) in parking lot
- Maintains connection to existing aircraft hangar
- Potential for small corporate aircraft staging area

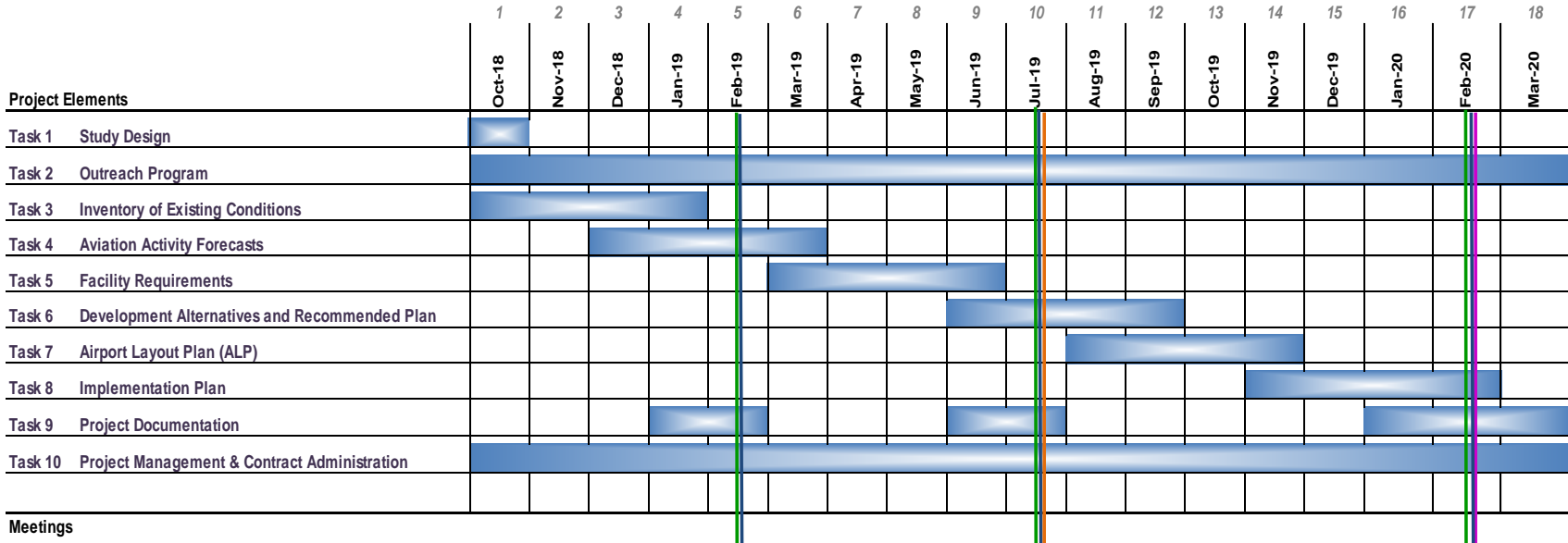


Next Steps

Driggs - Reed Memorial Airport

Airport Master Plan

Project Schedule



Work in Progress...

- FAA Forecast review
- Facility Requirements chapter
- Alternatives chapter
- Airport Layout Plan development
- Final meeting – February 2020





MEMORIAL
AIRPORT

Thank YOU

Questions???



Tony Davis
Planning Project Manager
Tony.davis@Jviation.com
443-307-3280

JVIATION[®]

**DRIGGS-REED MEMORIAL AIRPORT
MASTER PLAN UPDATE
STRATEGIC PLANNING MEETING**

**SEPTEMBER 3, 2019 - 2:00 TO 5:00 PM
CITY OF DRIGGS – TETON AVIATION**

AGENDA

1. Goals and objectives for the meeting
2. Update on neighboring properties for crosswind runway
3. Capacity for jet traffic
4. Capacity for small GA traffic
5. Development zones to accommodate and segregate jet traffic and small GA
6. Pilot facilities for small GA, in addition to FBO?
7. City park adjacent to airport? Other compatible use of city land?
8. Real estate development adjacent to airport. What level of development would be appropriate to envision as part of a 20-year plan? What type of businesses should we target to attract to the airport?
9. Next steps



**DRIGGS
REED**

MEMORIAL
AIRPORT

JOIN US!

DRIGGS REED MEMORIAL AIRPORT MASTER PLAN

OPEN HOUSE

MONDAY, SEPTEMBER 14TH

4:00PM - 5:30PM

DRIGGS TOWN HALL

60 S MAIN ST

DRIGGS, ID 83422



FOR ADDITIONAL INFORMATION ABOUT THE
WORKSHOP, PLEASE CONTACT LORI KYLE AT
208.354.2362 | EXT. 2190

JVIATION®

**DRIGGS-REED MEMORIAL AIRPORT
MASTER PLAN UPDATE
PLANNING ADVISORY COMMITTEE MEETING**

**FEBRUARY 10, 2020 4:00 – 5:30PM
CITY OF DRIGGS – COUNCIL CHAMBERS**

1. PROJECT UPDATE/STATUS
 - Overview of Completed Items

2. CURRENT PROJECT FOCUS
 - Future Development Alternatives
 - Approach and Things to Remember
 - Airside vs. Landside
 - Alternatives/Neighborhoods
 - Preferred Alternative Discussion

3. NEXT STEPS
 - On-Going Tasks
 - Next Steps

TENANT/USER SURVEY

We want your feedback! The Driggs-Reed Memorial Airport (DIJ) is in the process of updating the Airport's Master Plan. The Master Plan will guide the Airport through the next twenty years of development. Input is being solicited from based aircraft owners, tenants and users to determine adequacy of the facility.

Thank you for taking the time to complete this survey. Your input will help shape the future of DIJ. If you have questions regarding this survey or would like to discuss any issues regarding the airport facility, please contact Tony Davis, Project Manager at tony.davis@jviation.com or (443) 307-3280.

1. This form was completed by:

First Name (optional): _____

Last Name (optional): _____

Email Address (optional): _____

May we contact you to follow up on your survey responses, if needed?

Yes

No

Do you own one or more aircraft?

2. Aircraft #1

Single Engine Piston

Multi Engine Piston

Turbo-prop

Jet

Helicopter

Other

3. Aircraft #2

Single Engine Piston

Multi Engine Piston

Turbo-prop

Jet

Helicopter

Other

4. Aircraft #3

Single Engine Piston

Multi Engine Piston

Turbo-prop

Jet

Helicopter

Other

5. What are the make and model of your aircraft? _____

6. Approximately how many operations (takeoffs and landings) did you conduct at DIJ in 2017? _____

7. Please estimate the percentage of your aircraft operations for each: _____ % business _____ % recreational _____ % training

8. Approximately how many operations (takeoffs and landings) do you expect to conduct in 2018? _____ 2022? _____

9. Is your aircraft stored at DIJ?

Yes If yes, please indicate your current lease expiration date: _____

No If no, where is your aircraft based? _____

What might influence you to base your aircraft at DIJ? _____

continued on next page...

TENANT/USER SURVEY

10. Do you desire any additional hangar or apron space?

Yes

No

11. If so, please describe the ownership arrangement, size, and type of hangar (T-Hangar, box hangar, lease rate, etc.) or apron (tiedown, lease space, etc.) that you desire. _____

12. Is the existing runway length adequate for your requirements?

Yes

No

Please provide any comments regarding runway length. _____

13. Are the FBO services provided adequate for your needs?

Yes

No

14. Are there additional services that the FBO should provide to better serve you or others?

15. What facilities, activities, or capabilities do you consider essential for the Airport to provide?

Aircraft Fueling Services (Self-Service, FBO Fueling)

Aircraft Maintenance

GA Terminal Facilities

Aircraft Tie-downs/Hangars

Rental Cars

Fire & Rescue

Tourism/Entertainment Related Activities

Precision Instrument Approach (e.g. ILS, GPS)

Flight Instruction, aircraft rentals, aircraft Charter or Other Activities

Restaurant

Other (Please Specify) _____

continued on next page...

TENANT/USER SURVEY

16. Please rate the following categories based on your experience(s) at DIJ:

| | <i>(Poor)</i> | 1 | 2 | 3 | 4 | 5 | 6 | 7 | 8 | 9 | 10 |
|-------------------------------|---------------|---|---|---|---|---|---|---|---|---|----|
| Access to the Airport | | 1 | 2 | 3 | 4 | 5 | 6 | 7 | 8 | 9 | 10 |
| Adequacy of Parking | | 1 | 2 | 3 | 4 | 5 | 6 | 7 | 8 | 9 | 10 |
| Runway Orientation | | 1 | 2 | 3 | 4 | 5 | 6 | 7 | 8 | 9 | 10 |
| Runway Length | | 1 | 2 | 3 | 4 | 5 | 6 | 7 | 8 | 9 | 10 |
| Condition of Pavements | | 1 | 2 | 3 | 4 | 5 | 6 | 7 | 8 | 9 | 10 |
| Instrument Approaches | | 1 | 2 | 3 | 4 | 5 | 6 | 7 | 8 | 9 | 10 |
| Visual Aids | | 1 | 2 | 3 | 4 | 5 | 6 | 7 | 8 | 9 | 10 |
| Navigational Aids | | 1 | 2 | 3 | 4 | 5 | 6 | 7 | 8 | 9 | 10 |
| Hangar Space | | 1 | 2 | 3 | 4 | 5 | 6 | 7 | 8 | 9 | 10 |
| Hangar/Pad Lease Rates | | 1 | 2 | 3 | 4 | 5 | 6 | 7 | 8 | 9 | 10 |
| Fuel Prices | | 1 | 2 | 3 | 4 | 5 | 6 | 7 | 8 | 9 | 10 |
| FBO Services | | 1 | 2 | 3 | 4 | 5 | 6 | 7 | 8 | 9 | 10 |
| Airport Management | | 1 | 2 | 3 | 4 | 5 | 6 | 7 | 8 | 9 | 10 |
| Apron Space | | 1 | 2 | 3 | 4 | 5 | 6 | 7 | 8 | 9 | 10 |
| Security | | 1 | 2 | 3 | 4 | 5 | 6 | 7 | 8 | 9 | 10 |

Based on the above categories, which should get the highest priority? _____

17. How does the Airport contribute to the local economy and business environment? How does it improve the quality of life for residents and visitors? _____

18. Please provide any additional thoughts or concerns regarding the facilities at DIJ.

Thank You!

Thank you for participating in the survey. Your responses will greatly help our efforts on the Airport plan for the future.